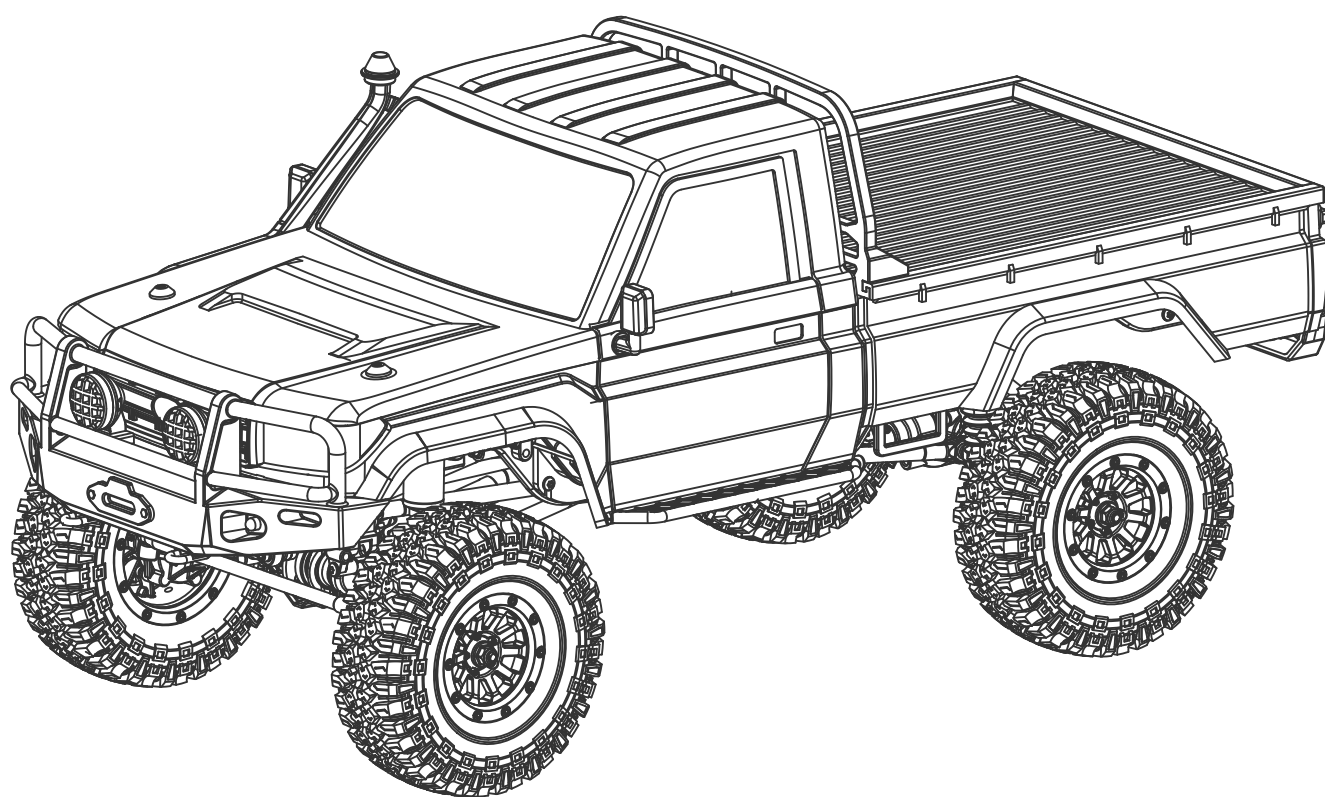


1/10电动四驱攀爬车说明书

1/10 SCALE 4WD ROCK CRAWLER MANUAL



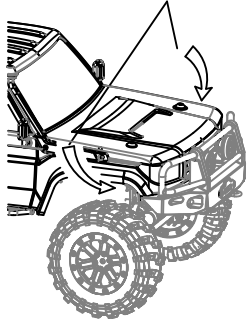
无论您是初学者或专业人士，在开始使用该产品前，请务必先认真阅读说明书，检查完各部件设定正常，以减少不必要的损失
Whether you are a beginner or professional, carefully read the ENTIRE instruction manual and inspect all the components are setting correctly before operating, to avoid unnecessary losses.

目录	2
操作说明和注意事项	3~5
组装图	6~18
配件表	18~25

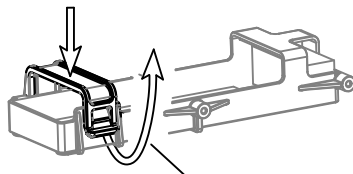
Table of Contents	2
Instructions and Precautions	3~5
Installations operation	6~18
Parts List	18~25

操作说明 Instructions

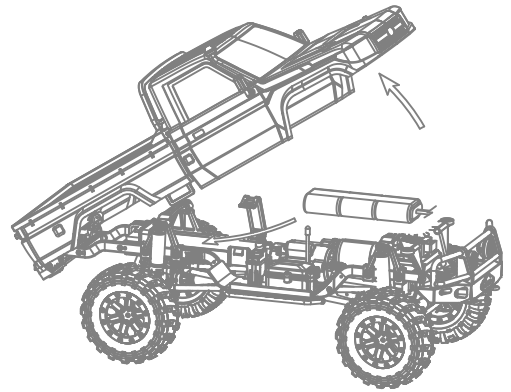
从车头两边伸入手指, 稍用力往上翻开车壳
Step into the fingers from both sides of the car and turn the car shell up slightly



先用一根手指稍用力往下按住电池扣中间
Use a finger to press down slightly in the middle of the battery button

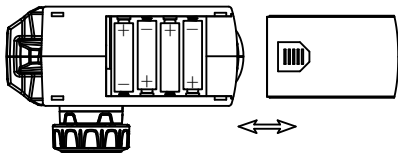


用大拇指轻松往上扳开电池扣
Use your thumb to easily pull up the battery button



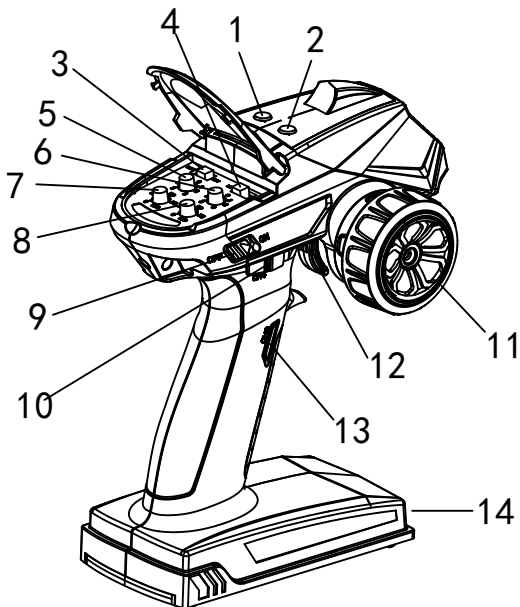
1. 往后翻开车壳后, 翻开电池壳。
After turning the bodyshell back, open the battery case.
2. 将充满电的电池装入电池盒, 扣上电池扣固定。
Insert the fully charged battery into fasten the battery clip.
3. 确保电调关闭, 插入连接好电池线和电调线。
Make sure the ESC is off, plug in the battery cable and the ESC cable.
4. 打开电调开关, 盖好车壳, 准备遥控器设置。
Turn on the ESC, cover the bodyshell, and prepare the Radio system settings.

遥控器电池安装 Radiosystem instructions



1. 按箭头方向滑动, 拆下或者安装发射机电池盖。
Slide in the direction of the arrow to remove or install the transmitter battery cover.
2. 装4颗电量充足的AA电池, 注意电池尺寸正负极如图所示, 不要装反。
Install 4 AA batteries with sufficient power, pay attention to battery size, Positive and negative as shown in the figure, do not install the opposite.

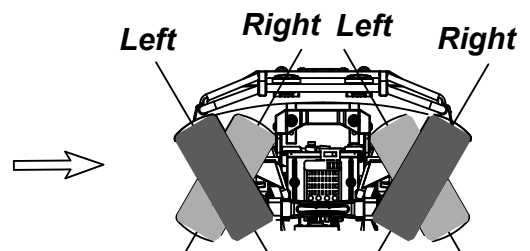
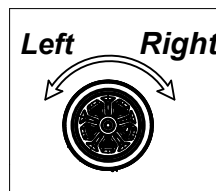
遥控器按键功能图 Function Switches



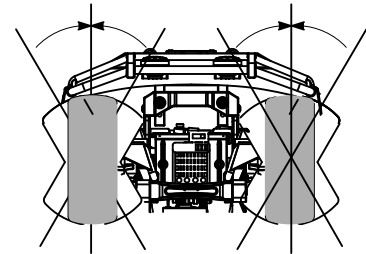
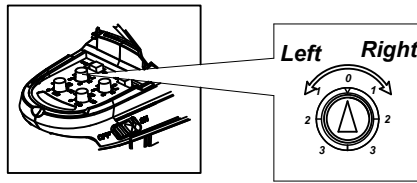
- | | |
|---|--|
| 1. 锁前差速 (5通)
Front differential lock (5th channel) | 8. 油门舵量
Throttle rudder |
| 2. 锁后差速 (6通)
Rear differential lock (6th channel) | 9. 电源开关
Power switch |
| 3. 转向正反开关
Steering forward and reverse switch. | 10. 灯控 (4通)
Light (4th channel) |
| 4. 油门正反开关
Throttle front and back switch | 11. 转向轮 (1通)
Steering wheel (1st channel) |
| 5. 转向微调
Steering trimming | 12. 油门扳手 (2通)
Throttle wrench (2nd channel) |
| 6. 油门微调
Throttle trimming | 13. 高低速换挡 (3通)
High and low speed shift (3rd channel) |
| 7. 转向舵量
Steering rudder | 14. 电池仓
Battery compartment |

按下1, 2开关, 1, 2灯亮表示差速器锁止, 按下13开关13灯亮表示切换为高速。
Press the 1 and 2 switch, both buttons lights indicate the differentials are locked. Press 13 switch, the button light indicates switch to HIGH speed mode.

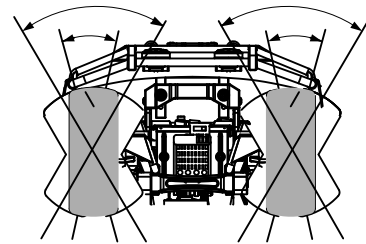
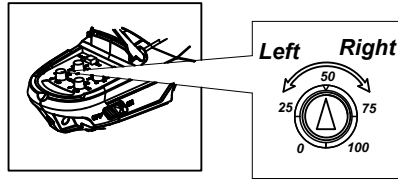
把方向轮往左或往右可使车相应往左转或往右转
Turn the steering wheel to the left or right to make the car turn left or right.



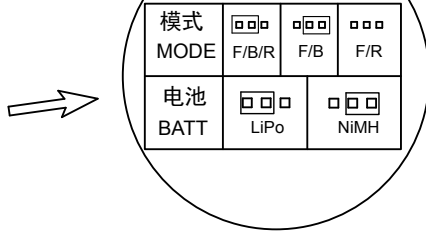
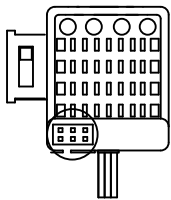
中位微调按钮向左或向右使前轮
微小向左或者向右
Fine-tuning the button to the left
or right to make the front wheel
slightly left or right



舵量微调按钮向左或向右使前轮
最大转向角度变小或者变大
Turn the steering rudder knob to
adjust Front wheels with less or more
steering angles



电调设置说明 ESC Instructions



F/B/R: 前进/刹车/后退模式 F/B: 前进/刹车模式
F/B/R: Forward/Brake/Reverse F/B: Forward/Brake
F/R: 前进/后退模式(攀爬模式)
F/B/R: Forward/Reverse(Crawler mode)

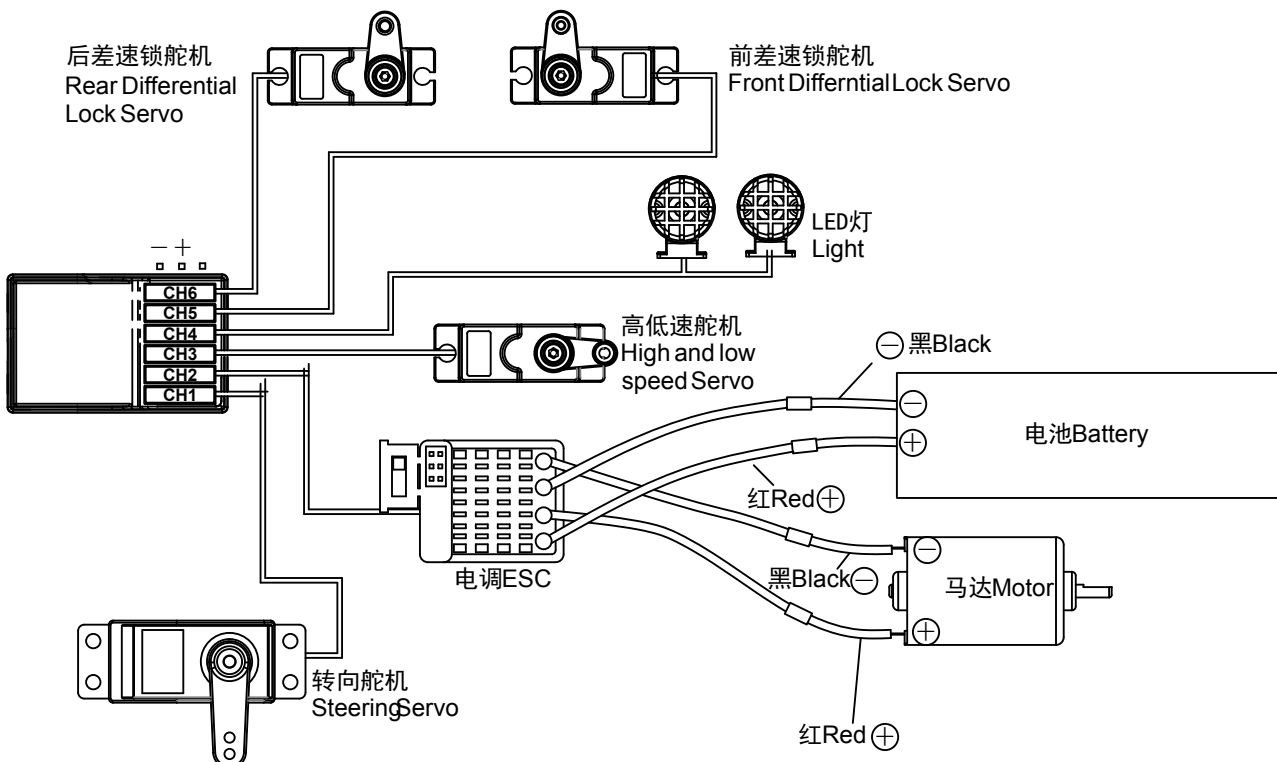
如图所示, 电调跳线帽插入不同的位置, 调整电调的模式和电池的
类型, 每次插好后需关掉电调重启生效.

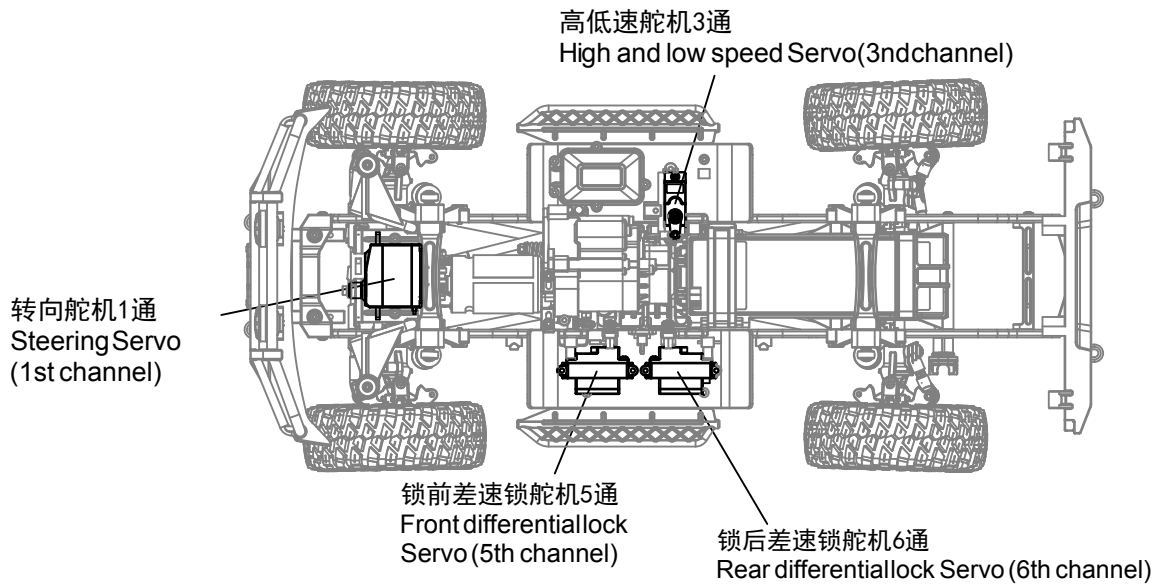
As the image shown, Jumper locations : to change the ESC
mode and Battery(LiPo or NiMH). Kindly note restart the ESC
to save the setting

电子设备的连接 Device connection

出厂前均连接好。接收机1通道连9KG伺服器控制转向, 2通道连电调控制油门, 3通道连 接17G舵机控制高低速换挡, 4通道连接LED
灯, 5通道连接17G舵机控制前桥差速锁, 6. 通道连接17G舵机控制后桥差速锁, 注意电池, 马达的连接, 黑色负极, 红色正极.

Connected well before leaving the factory. The 1 channel of the connector is connected to the 9KG servo to control the steering, the 2 channel is connected to the ESC control throttle, the 3 channel is connected to the 17G servo to control the high and low speed shifting, the 4 channel is connected to the LED light, and the 5 channel is connected to the 17G servo to control the front axle differential lock. The 6-channel is connected 17G servo to control the rear axle differential lock. Pay attention to the battery and motor connection, black negative, red positive.





注意事项
Precautions

1. 玩车远离人群，儿童需在成人监护下使用，需大于14周岁。
Play away from the crowd, children need to be under adult supervision, need to be more than 14 years old.
2. 电池充电时有任何过热变形，立即中断。不得长时间无人看守充电。
If there is any overheating deformation when the battery is charging, it will be interrupted immediately. Do not out of watching for a long time when is is charging.
3. 电池电量不足时要及时更换，跑完玩车需要断电存放。
When the battery is low, it should be replaced in time. After running the car, you need to power off to store.
4. 遥控系统有各种不同的功能和设置，初次接触前确保所有的功能设置完全理解。未能正确操作产品可能会导致损坏产品，个人财产和造成严重伤害。这是一个复杂的爱好产品。它必须谨慎和常识操作，并需要一些基本的机械能力。
The remote control system has a variety of different functions and settings, ensuring that all function settings are fully understood before initial contact. Failure to operate the product correctly can result in damage to the product, personal property and cause serious injury. This is a sophisticated hobby product. It must be operated with caution and common sense and requires some basic mechanical ability.

产品规格参数
Product specification:

车长Length:	542MM
车宽Width:	250MM
车高Height (chassis):	240MM
轮胎Tyre Diameter/Widht:	116/42MM
轴距Wheelbase:	313MM
车重 (RTR):	3.5KG
离去角Departure:	45°
接近角Approach	60°
转向角度Steering Angle:	43°
离地间隙Ground clearance:	53MM

	低速齿轮比: Low Speed Gear ratio	高速齿轮比: High Speed Gear ratio
马达齿16T Pinion Gear16T:	1/37.1	1/15.1
马达齿18T Pinion Gear18T:	1/33.0	1/13.4
马达齿20T Pinion Gear20T:	1/29.7	1/12.1
马达齿22T Pinion Gear22T:	1/27.0	1/11.0

维修服务

Repair service:

1. 车辆需要经常保养，特别是活动的零件部位，每次跑车完及时清除上面的尘土杂物。
The vehicle needs regular maintenance, especially the parts of the activity. Every time the sports car is finished, it will remove the dust and debris.
2. 定期检查车上有螺丝的地方，有必要就拧紧加固。
Regularly check the screws on the car and tighten them if necessary.
3. 经常检查车上面容易磨损的地方，有必要就换掉。
Always check the place where the car is easy to wear, and replace it if necessary.
4. 所有的零件都可以作为散件在爆炸图上找到编号，有损坏可以在零售商订购更换。有任何问题，都可以在零售商寻求帮助。
All parts can be found as parts on the exploded map. Damage can be ordered at the retailer. If you have any questions, you can ask for help at the retailer.

本模型特性

The characteristics of this model:

高级版配置 Advanced Version:

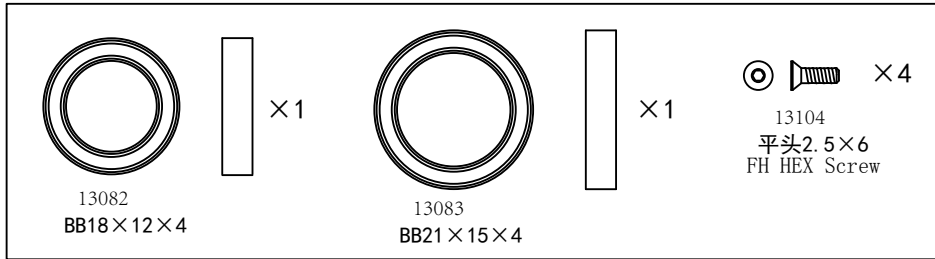
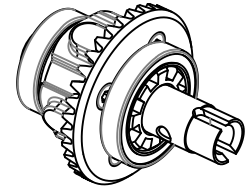
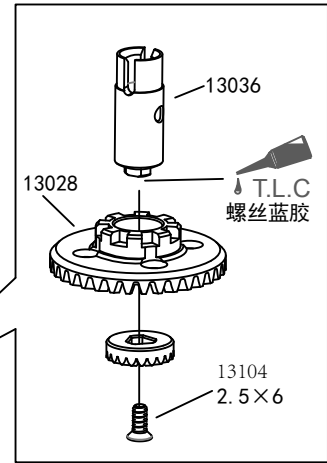
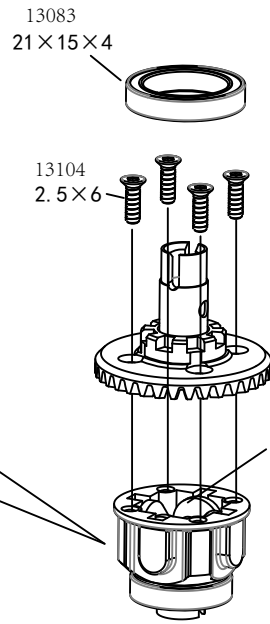
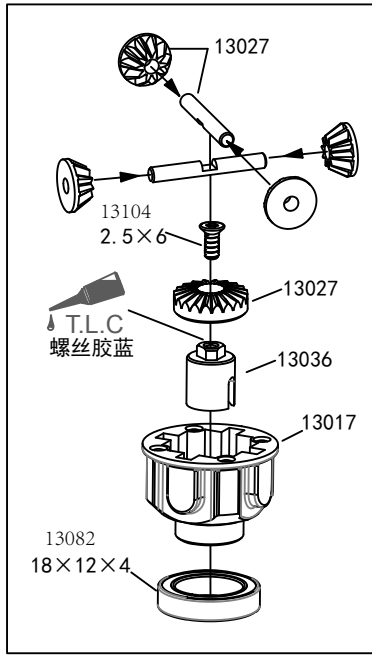
全新独特设计，前后桥可锁止差速机构
Remote Locking Differentials
全新独特设计，高低速任意切换，带过载保护装置
Two-speed with overload protection Transmission
全新独特设计，门式前后硬桥连接，更高通过性
Portal Axles provide 75mm ground clearance and eliminate torque twist
旋转式快拆车壳，旋转式快拆电池盒
Flip-top body with magnetic buckle and Hinged battery tray
6通道遥控
6 channel radio system
好赢有刷攀爬车专用电调
Hobbywing crawler ESC
攀爬车特制550黑皮马达
Crawler 550 motor
CNC铝合金可调马达座，机加工马达钢齿
CNC aluminum adjustable motor mount and CNC metal pinion gear
9KG全金属伺服器*1，0.9KG小伺服*3
9kg metal gear Servo x 1, and 0.9kg Servo x 3
全车采用进口高精度轴承
Ball bearing for the whole car
CNC 5mm 铝合金6061大梁
CNC 5mm 6061 aluminum frame
全车金属万向传动轴*6
Hardened steel universal drive shaft 6pcs
独特设计，金属内置避震器带防尘套
Aluminum internal spring shock absorber with shock boot
独特设计，转向避震器
Unique steering shock absorber design
1. 2mm 丝印PC车壳
1.2mm PC body shell

标准版配置 Standard Version:

无前后桥可锁止差速机构，采用硬轴连接
Without Remote Locking Differentials
全新独特设计，高低速任意切换，带过载保护装置
Two-speed with overload protection Transmission
全新独特设计，门式前后硬桥连接，更高通过性
Portal Axles provide 75mm ground clearance and eliminate torque twist
旋转式快拆车壳，旋转式快拆电池盒
Flip-top body with magnetic buckle and Hinged battery tray
3通道遥控（转向，油门，高低速切换）
3 channel radio system
好赢有刷攀爬车专用电调
Hobbywing crawler ESC
攀爬车特制550黑皮马达
Crawler 550 motor
冲压铝合金马达座，机加工马达铜齿
Stamping alum motor mount and CNC machined copper motor pinion
9KG全金属伺服器*1，0.9KG小伺服*1
9kg metal gear Servo x 1, and 0.9kg Servo x 1
全车采用国产高精度轴承
High Precision sealed Ball Bearing
5mm 铝合金6061大梁
5mm 6061 aluminum frame
前万向传动轴*2，后狗骨*2，中央塑胶传十字节动轴*2
Hardened steel front universal drive shaft 2pcs, aluminum rear dogbone 2pcs. Plastic center driveshaft 2pcs
独特设计，金属内置避震器带防尘套
Aluminum internal spring shock absorber with shock boot
独特设计，转向避震器
Unique steering shock absorber design
1. 2mm 丝印PVC车壳
1.2mm PVC body shell

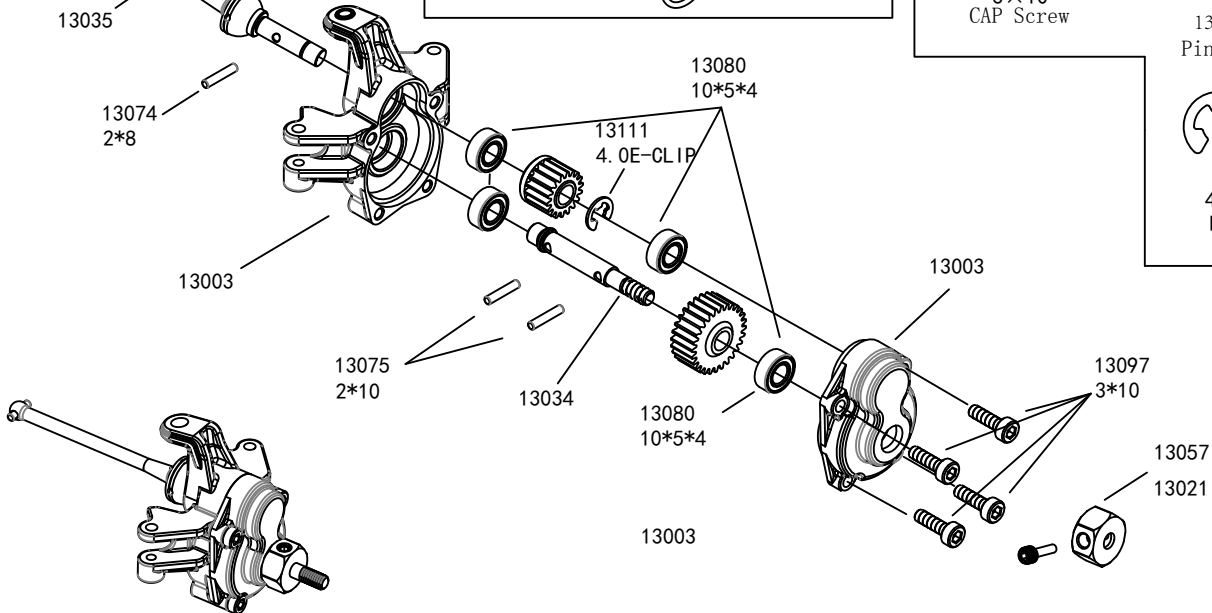
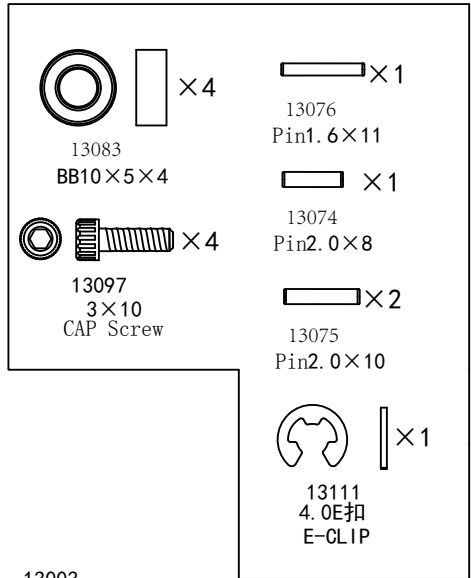
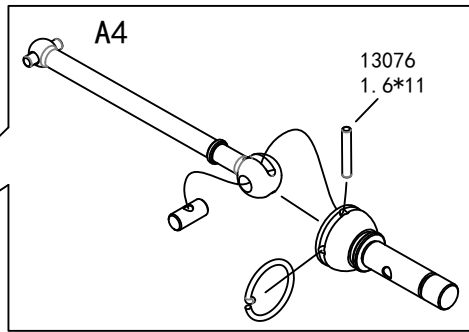
A Differential Gear Assembly

差速器组 前/后 A2 A7



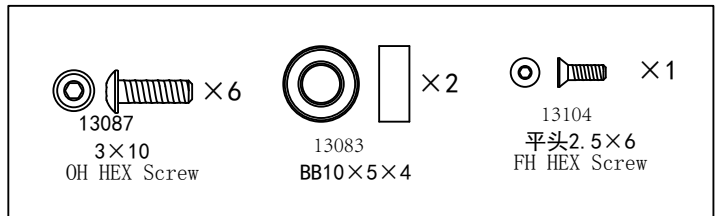
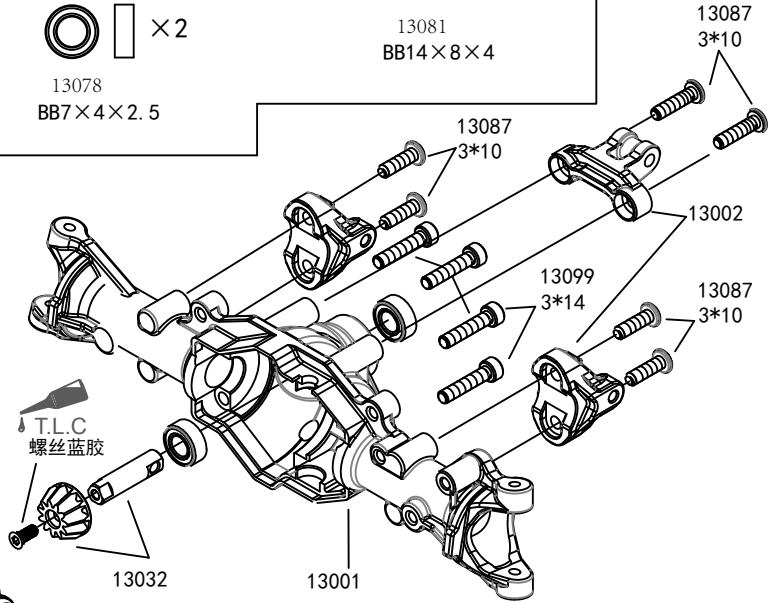
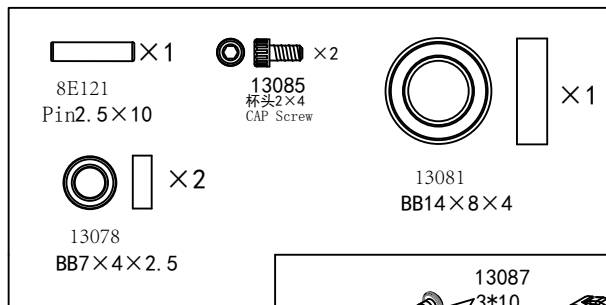
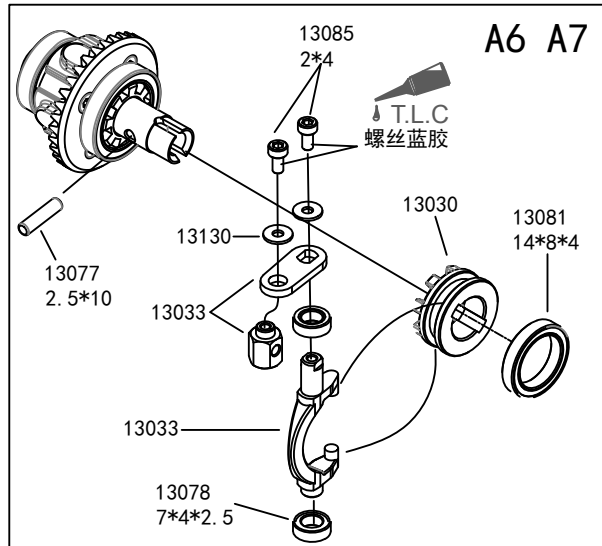
Spindleset

转向臂组
左/右 A2 A3 A7



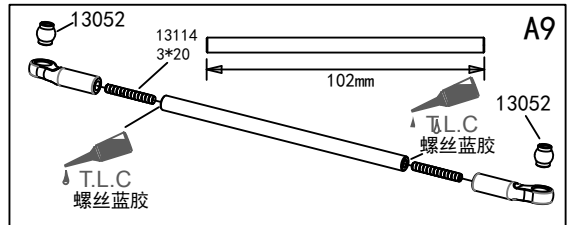
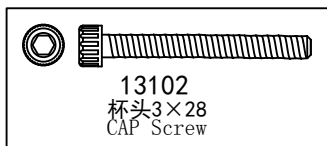
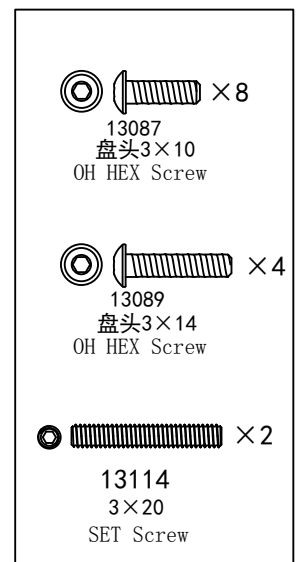
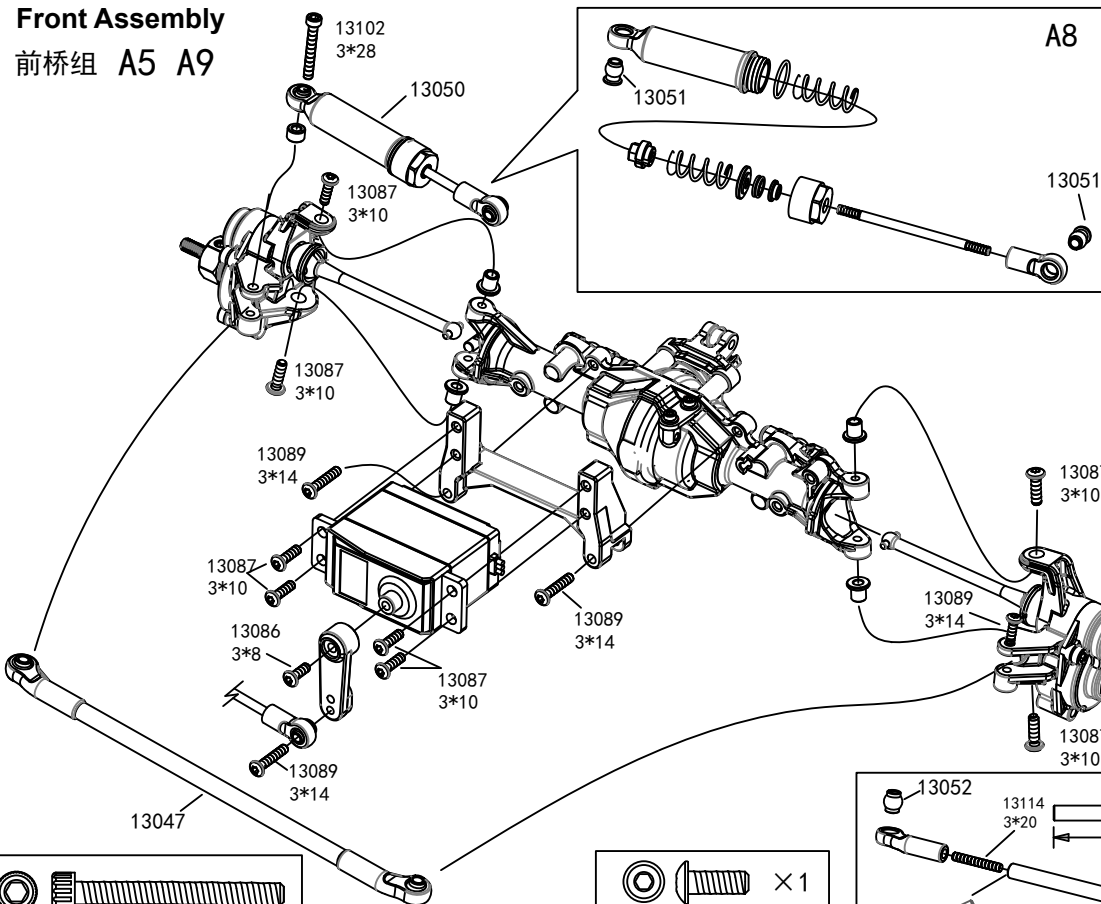
Front Assembly

桥箱组 前 A1 A6 A7

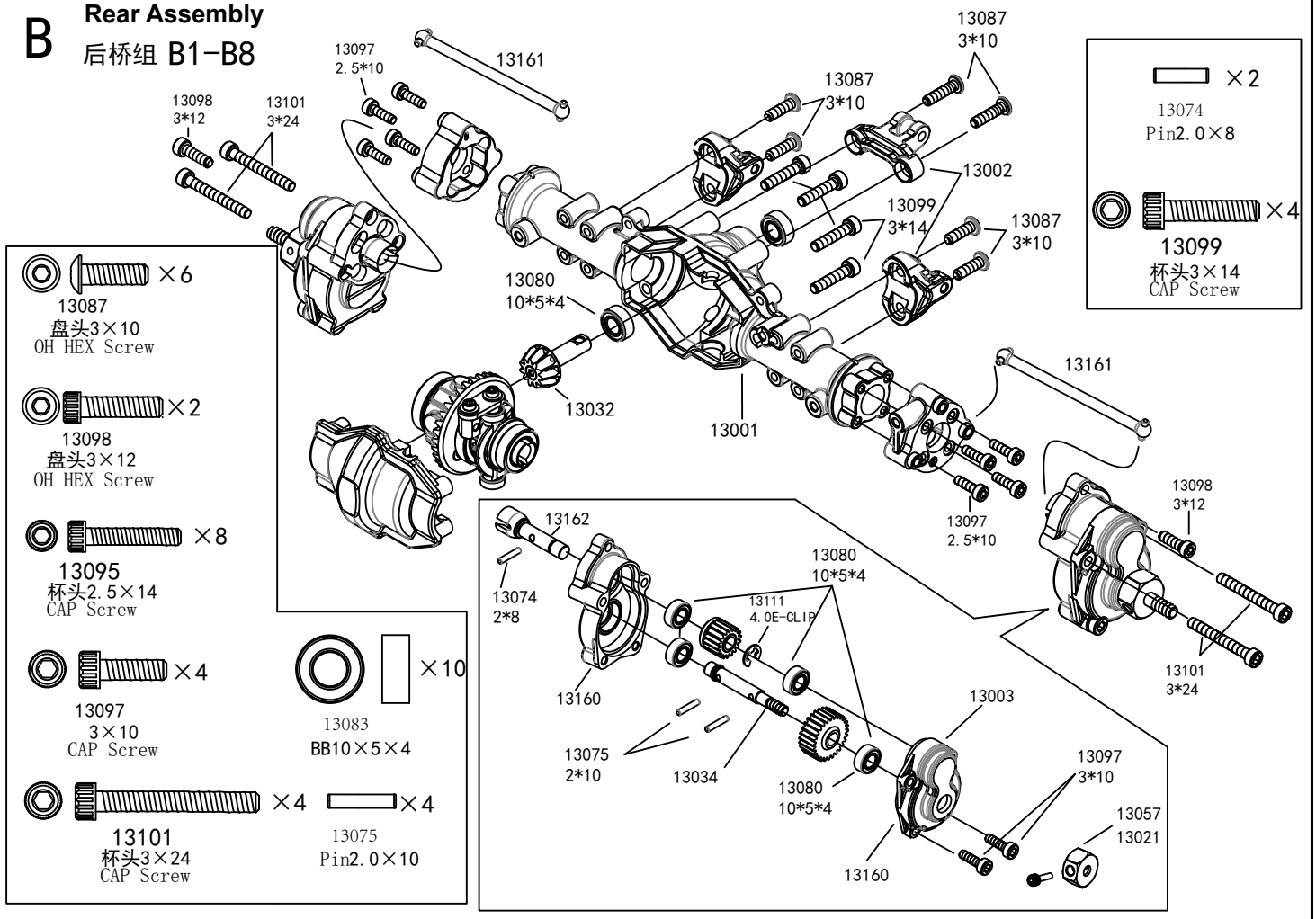


Front Assembly

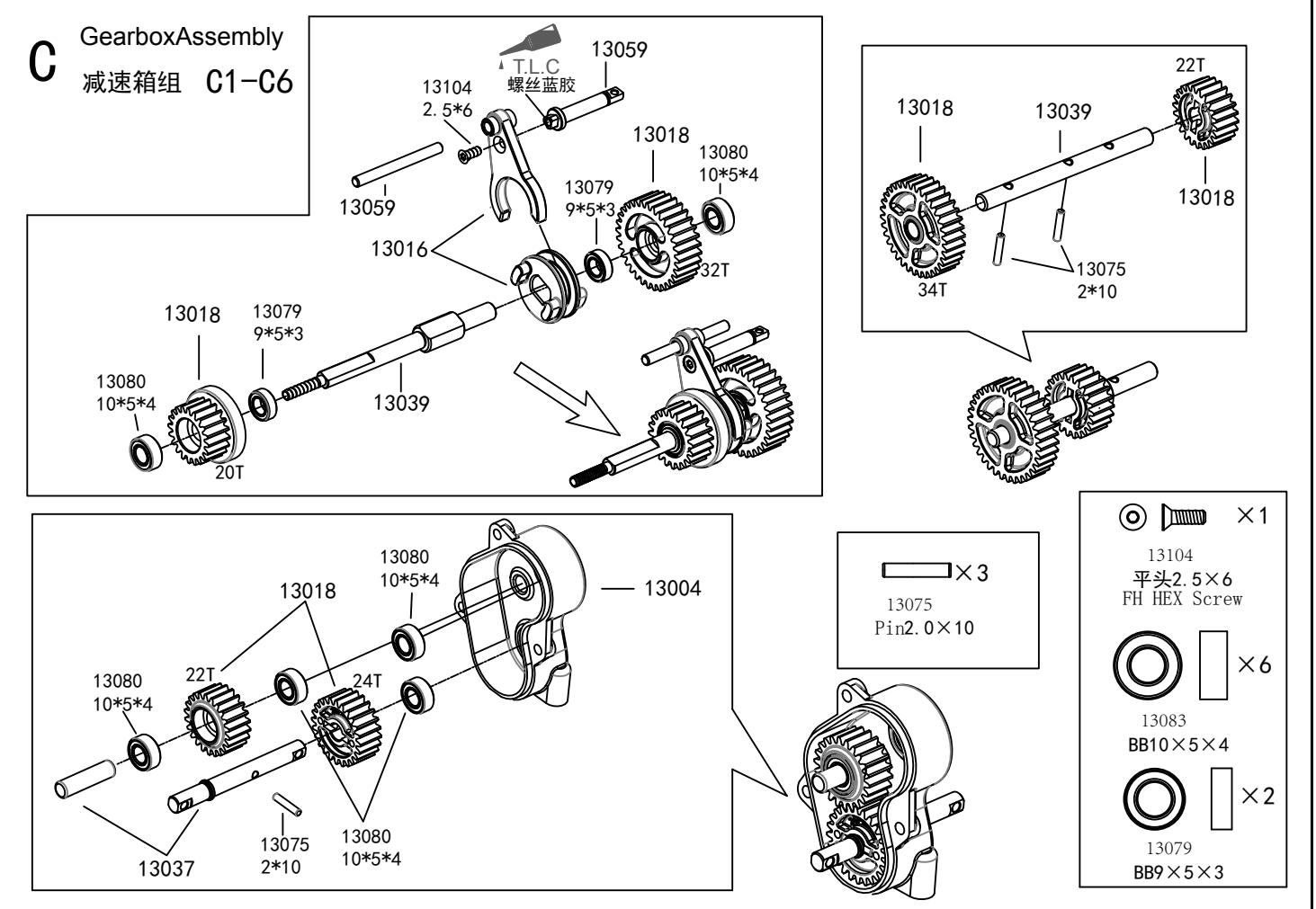
前桥组 A5 A9



B Rear Assembly 后桥组 B1-B8

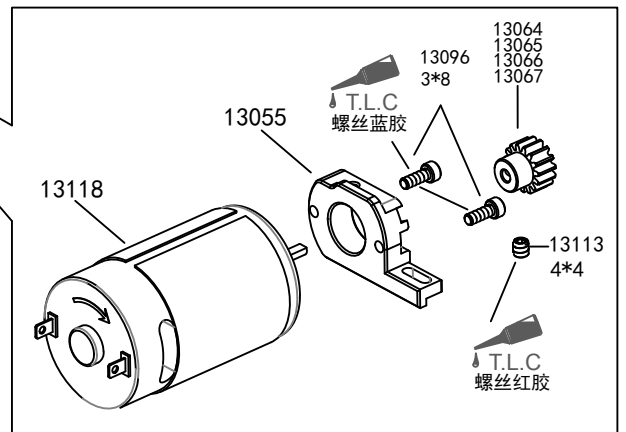
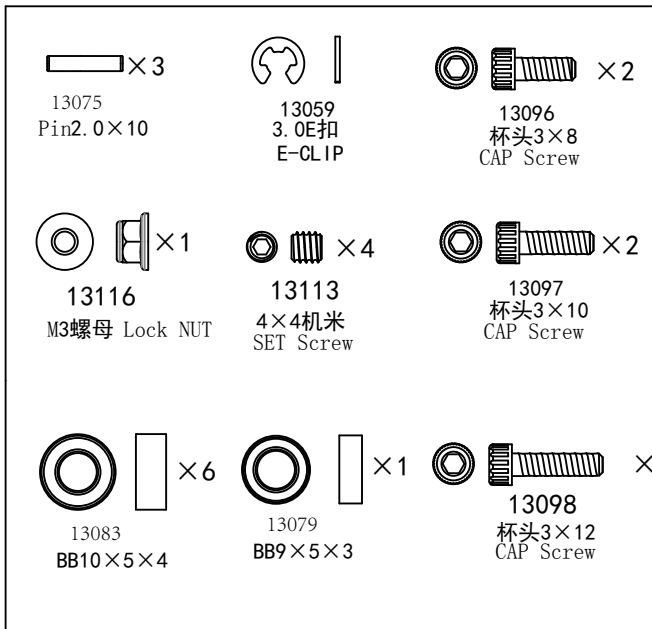
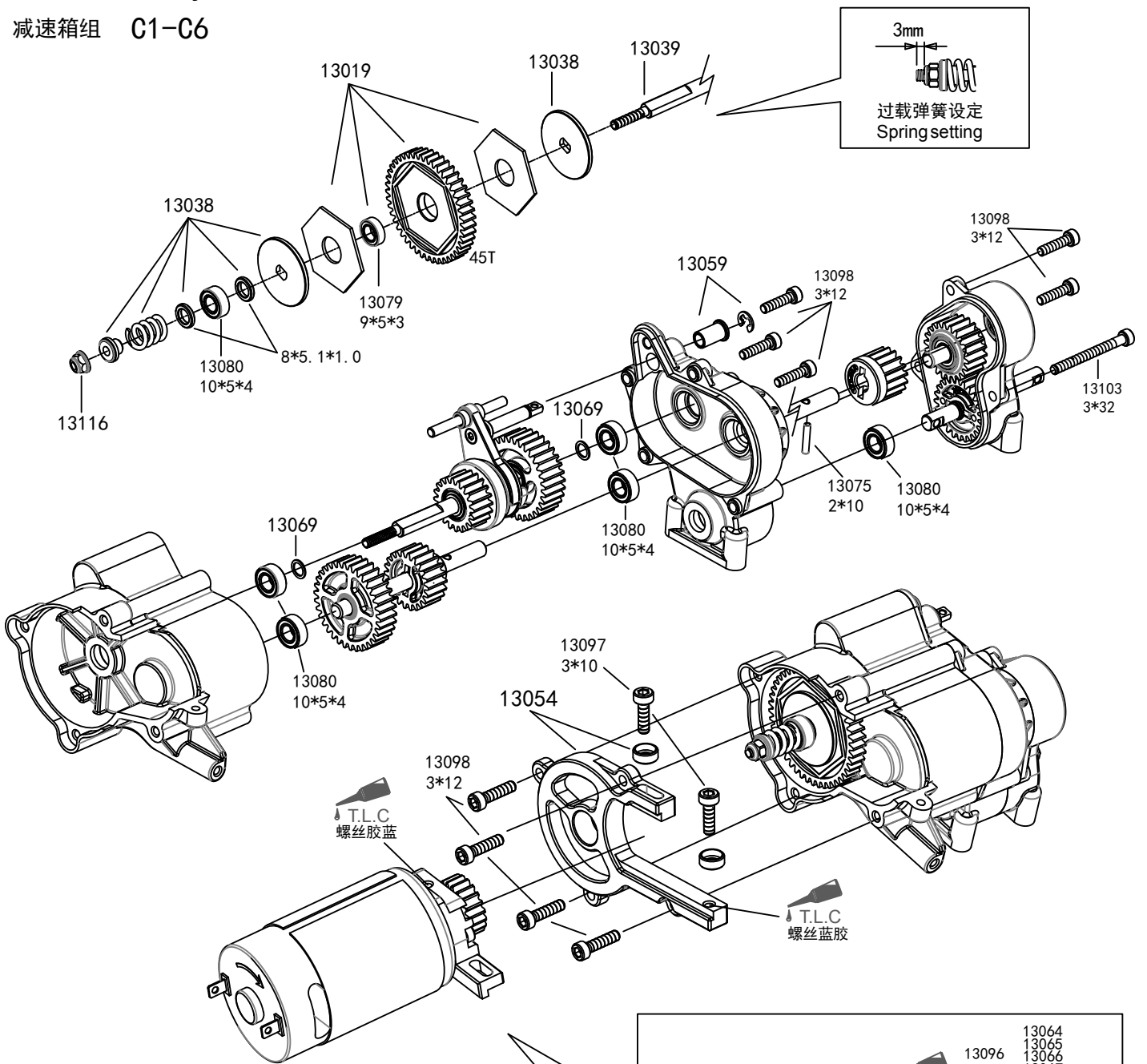


C Gearbox Assembly 减速箱组 C1-C6



Gearbox Assembly

减速箱组 C1-C6

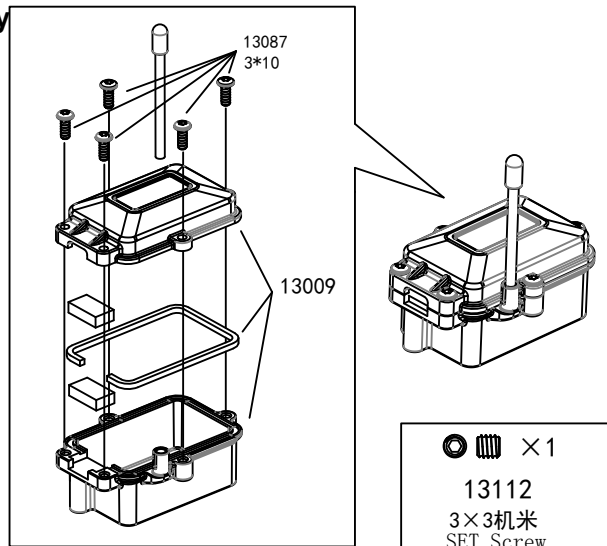
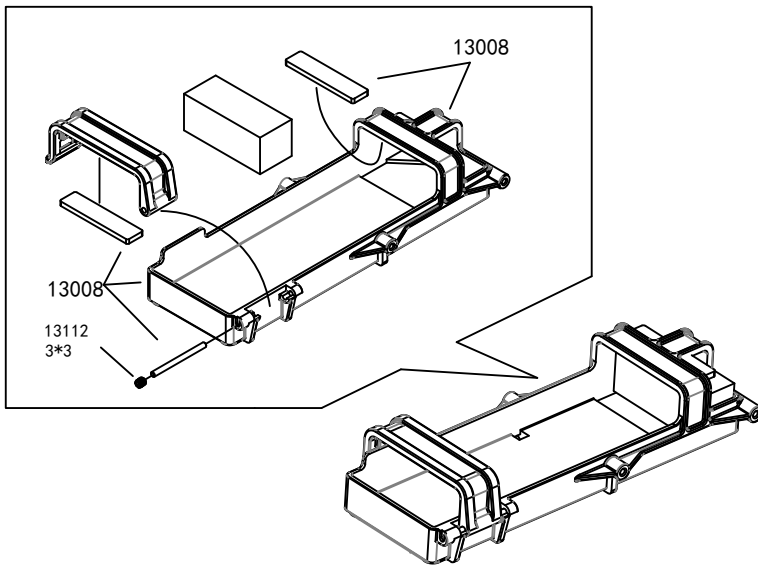






D Battery box Assembly

电池盒组 D3

E Receiverbox Assembly

接收机盒组 E1 E2



- 

 × 1
 13112
 3×3机米
 SET Screw
- 

 × 5
 13087
 盘头3×10
 OH HEX Screw

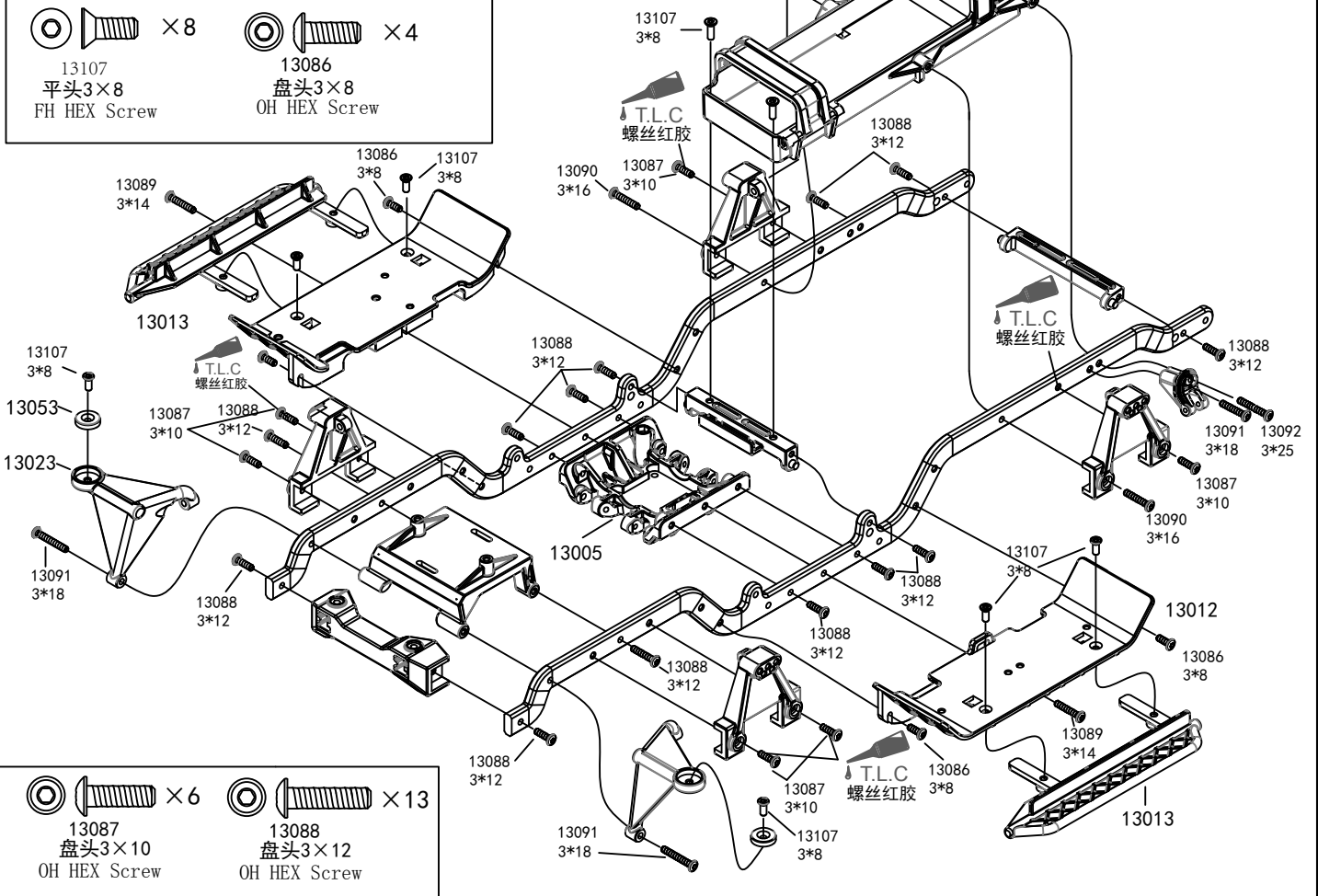
Chassis Assembly













车身中段组 D1-D4 E1-E2 L

- 

 × 8
 13107
 平头3×8
 FH HEX Screw
- 

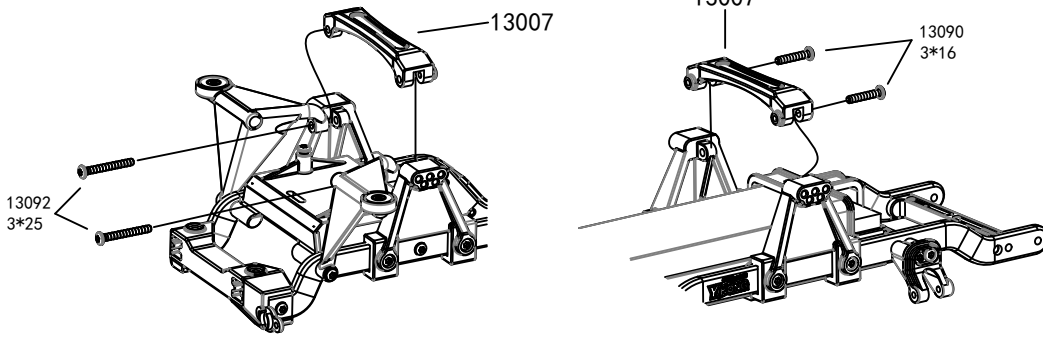
 × 4
 13086
 盘头3×8
 OH HEX Screw



- 

 × 6
 13087
 盘头3×10
 OH HEX Screw
- 

 × 13
 13088
 盘头3×12
 OH HEX Screw
- 

 × 2
 13089
 盘头3×14
 OH HEX Screw
- 

 × 2
 13090
 盘头3×16
 OH HEX Screw
- 

 × 3
 13091
 盘头3×18
 OH HEX Screw
- 

 × 1
 13092
 盘头3×25
 OH HEX Screw

Chassis Assembly

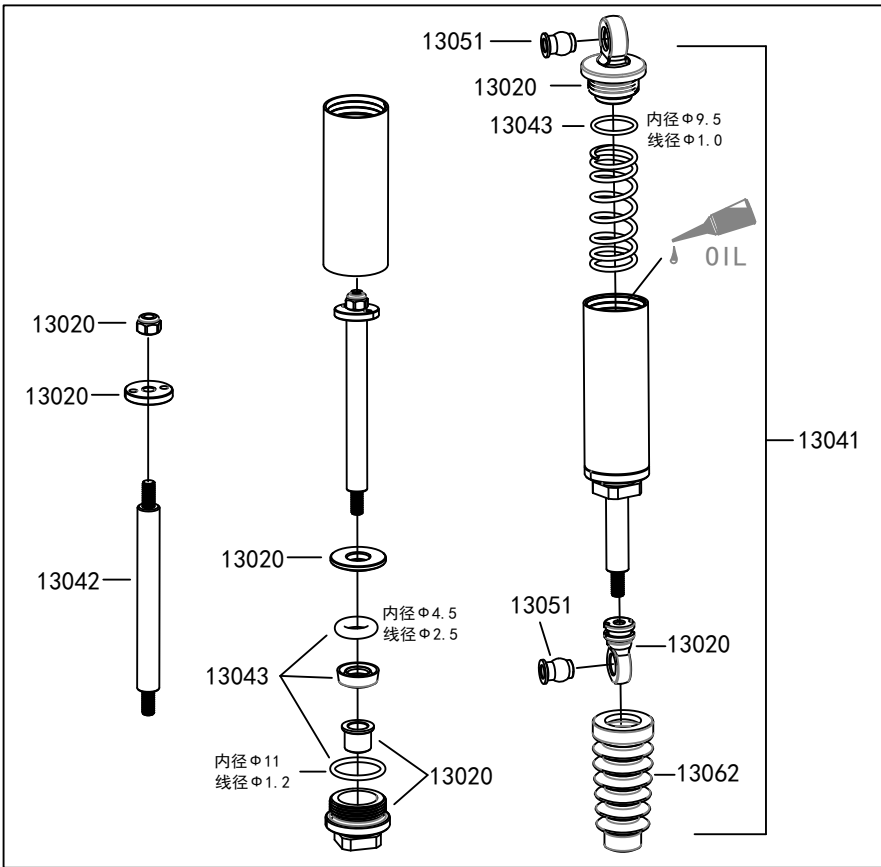
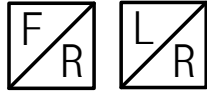
车身中段组 D1 D4



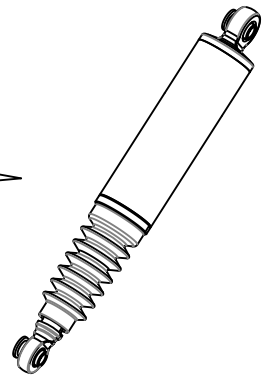
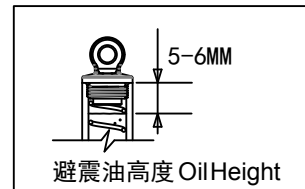
	× 2
13090	盘头3×16
	OH HEX Screw
	× 1
13092	盘头3×25
	OH HEX Screw

F Shock Assembly

避震器 前/后/左/右 F1-F4



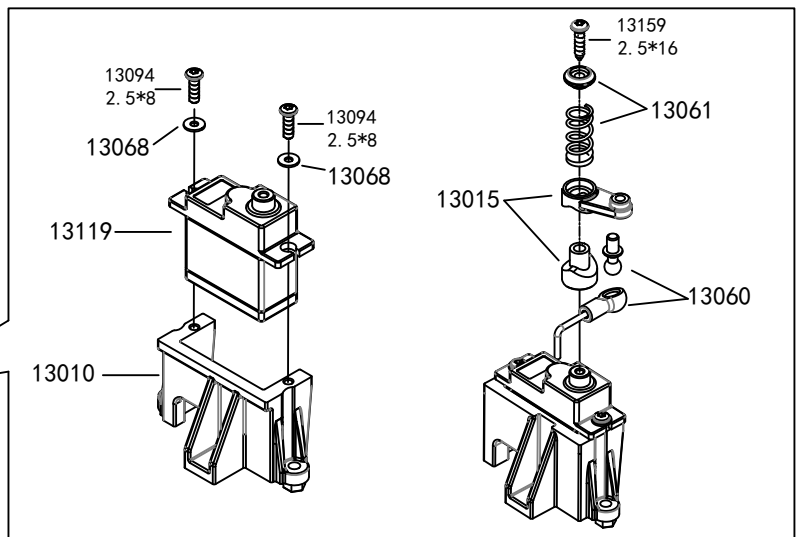
	× 1
13115	M3螺母 Lock NUT



Hi/Low speeds servo assembly

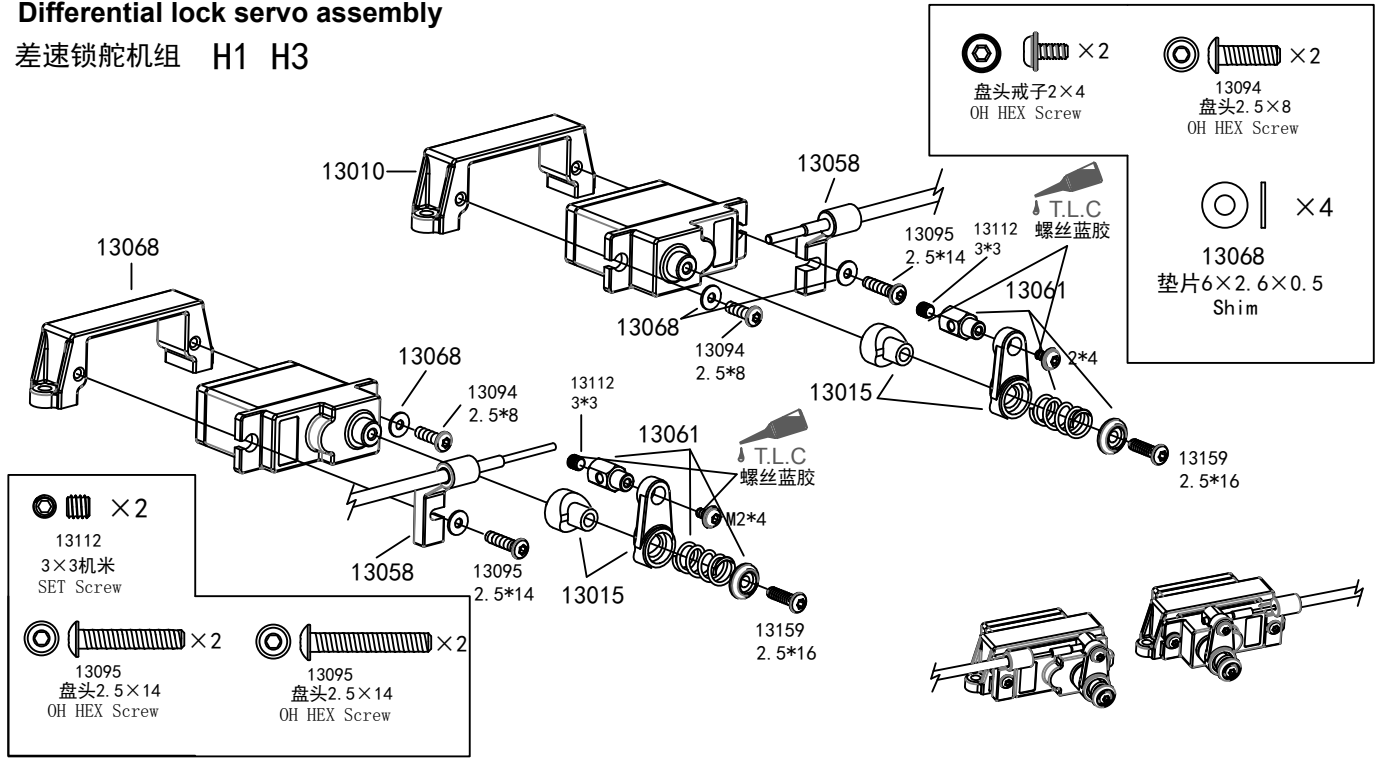
高低速舵机组 H2 H3

	× 2		× 1
13094	盘头2.5×8	13159	盘头2.5×16
	OH HEX Screw		OH HEX Screw
	× 2		
13068	垫片6×2.6×0.5		
	Shim		



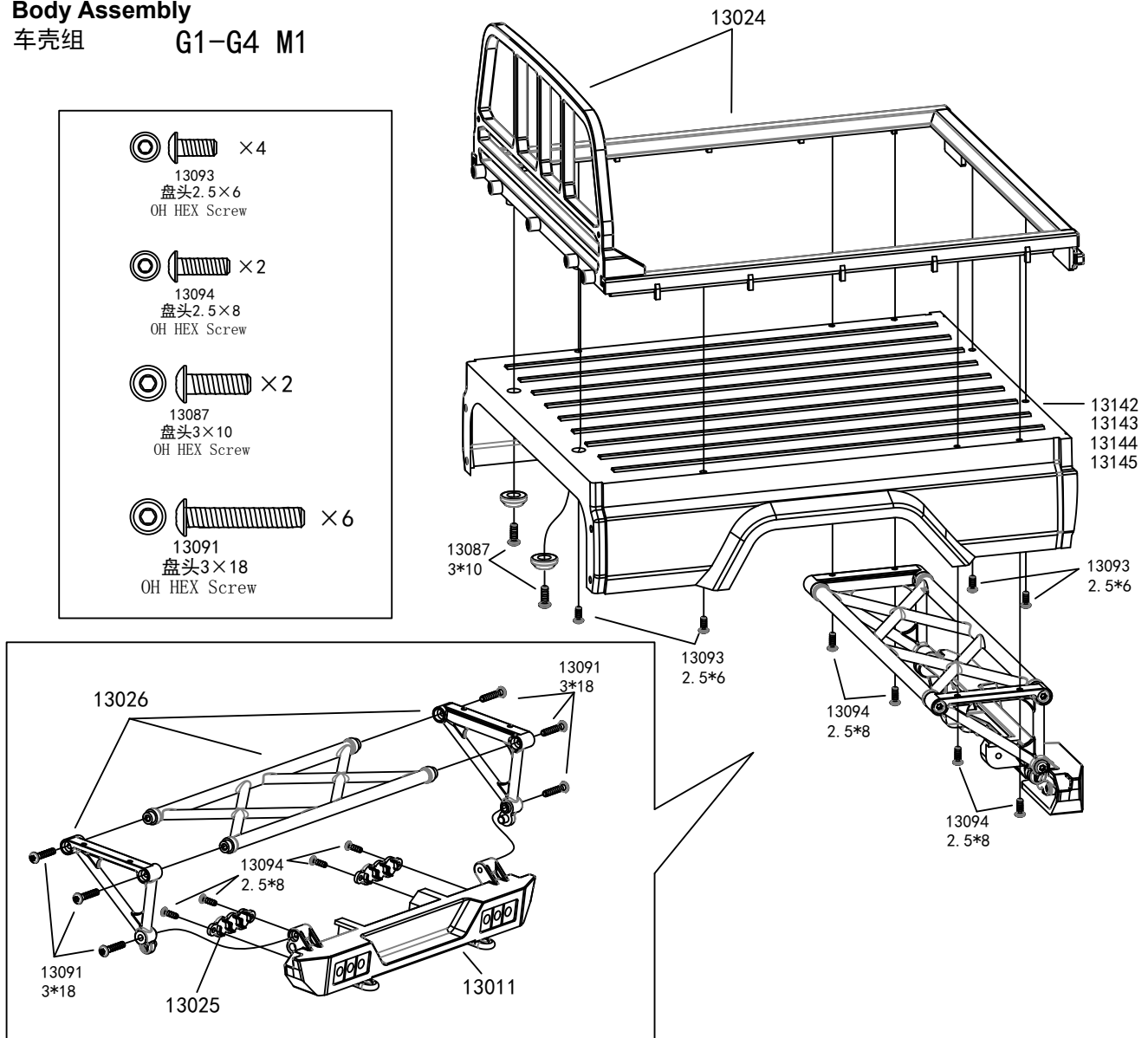
Differential lock servo assembly

差速锁舵机组 H1 H3





Body Assembly

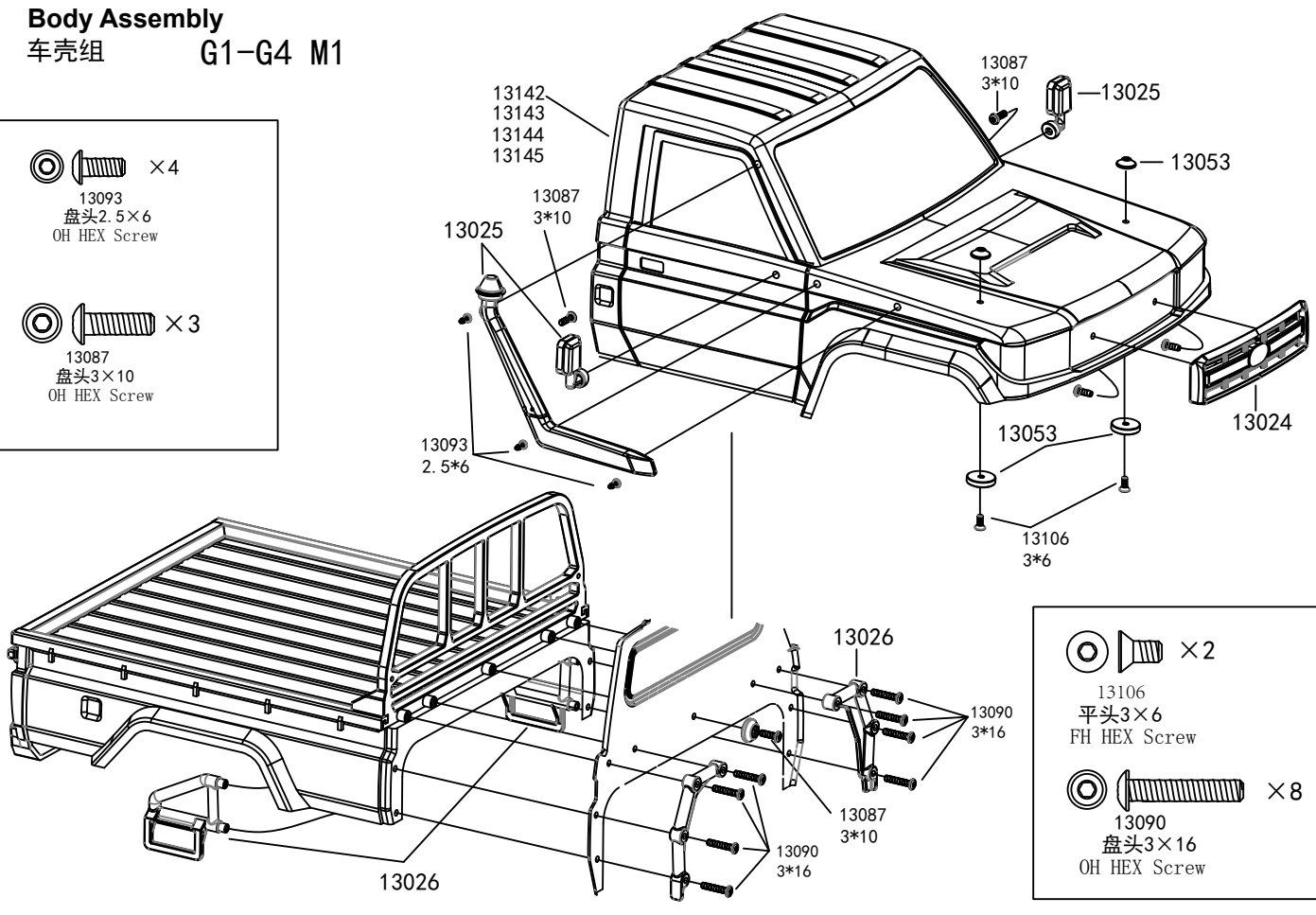
车壳组 G1-G4 M1

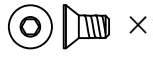


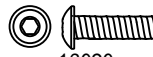
Body Assembly
车壳组 G1-G4 M1

 × 4
 13093
 盘头2.5×6
 OH HEX Screw

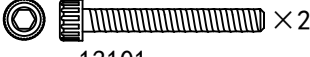
 × 3
 13087
 盘头3×10
 OH HEX Screw

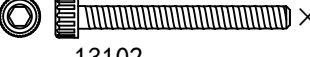



 × 2
 13106
 平头3×6
 FH HEX Screw


 × 8
 13090
 盘头3×16
 OH HEX Screw


Front portal assembly linkage shock installation
前桥组拉杆, 避震器安装 11-13

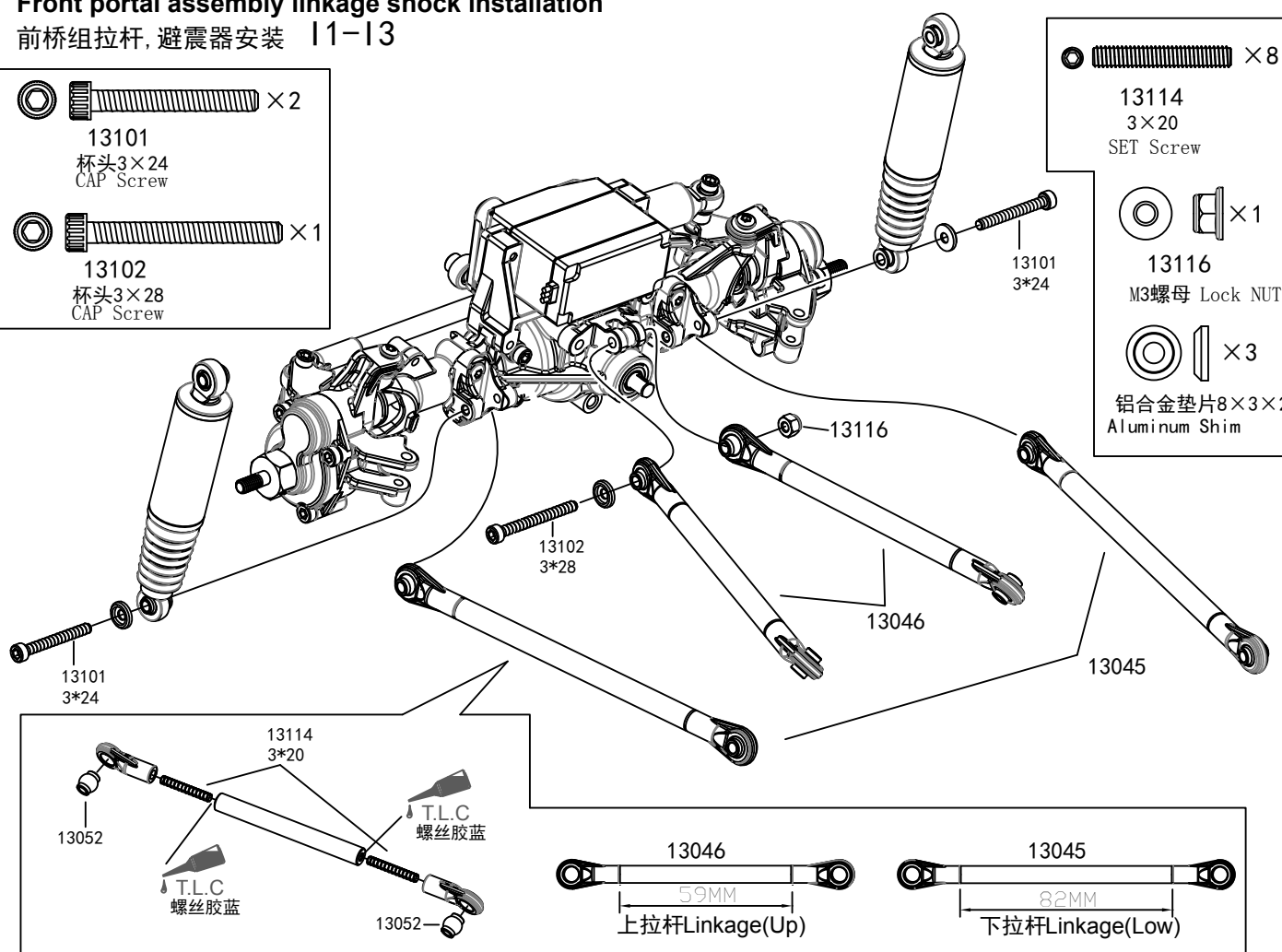
 × 2
 13101
 杯头3×24
 CAP Screw

 × 1
 13102
 杯头3×28
 CAP Screw

 × 8
 13114
 3×20
 SET Screw

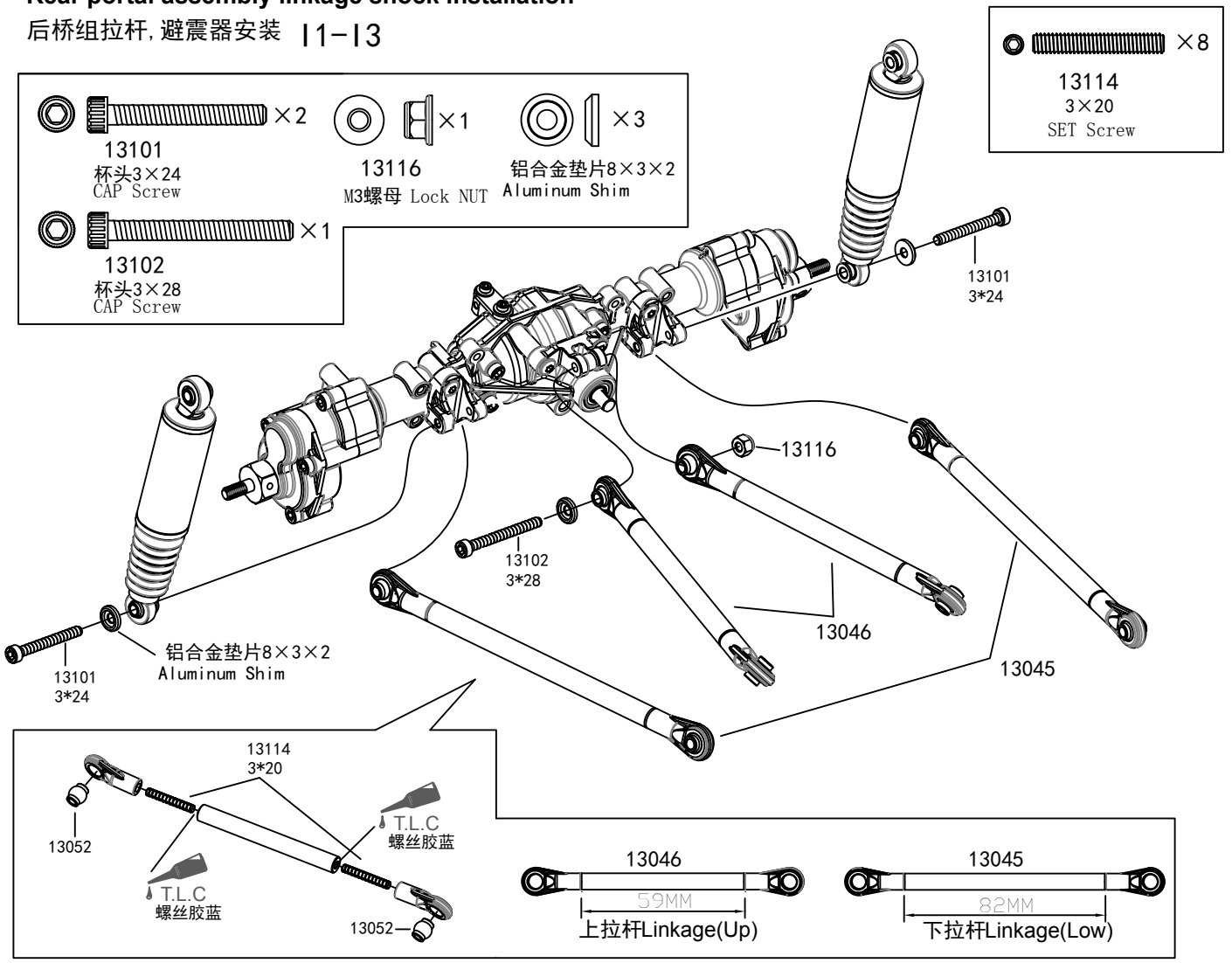
 × 1
 13116
 M3螺母 Lock NUT

 × 3
 铝合金垫片8×3×2
 Aluminum Shim



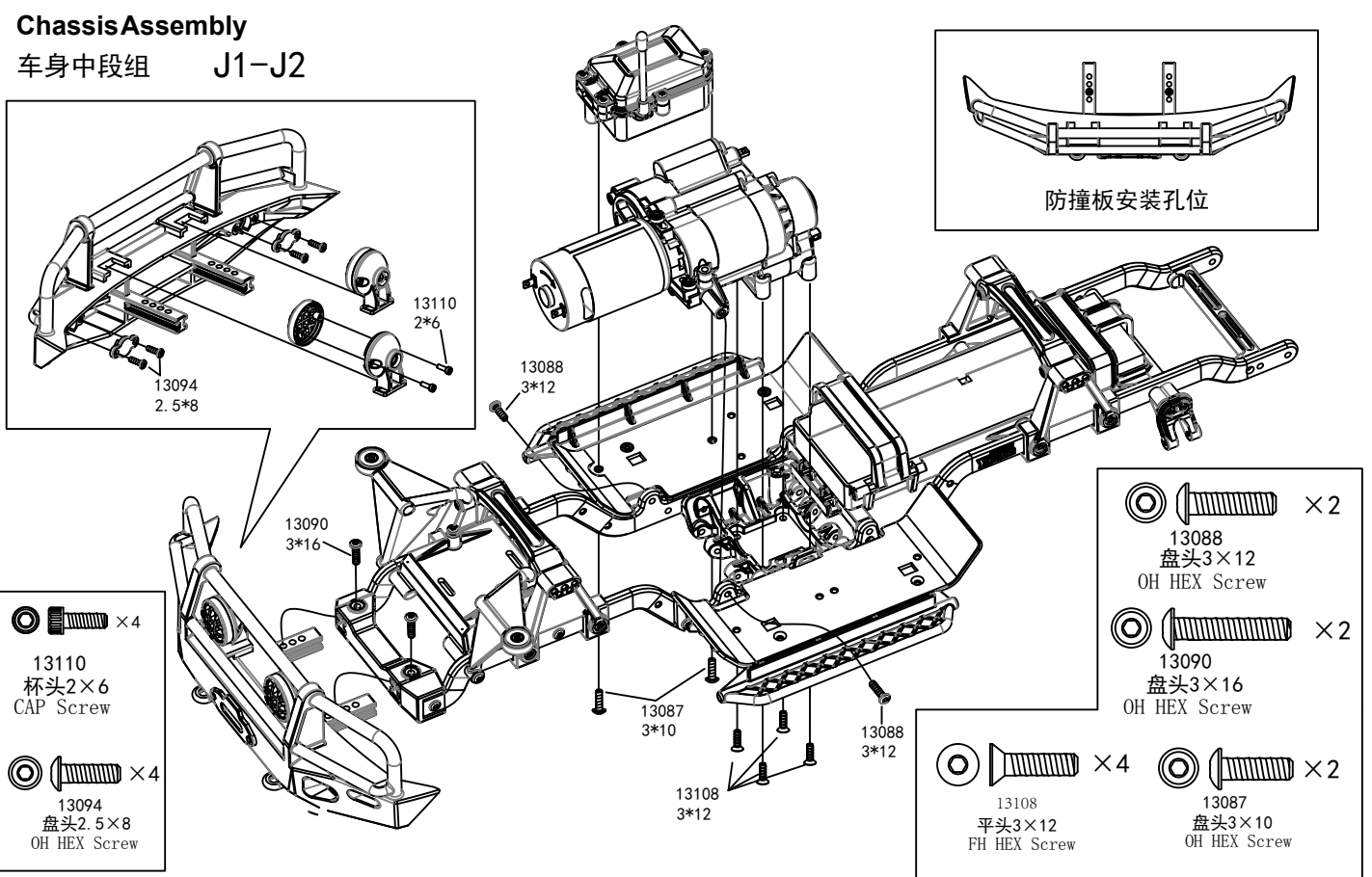
Rear portal assembly linkage shock installation

后桥组拉杆, 避震器安装 11-13



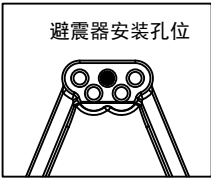
Chassis Assembly

车身中段组 J1-J2



Modular Assembly

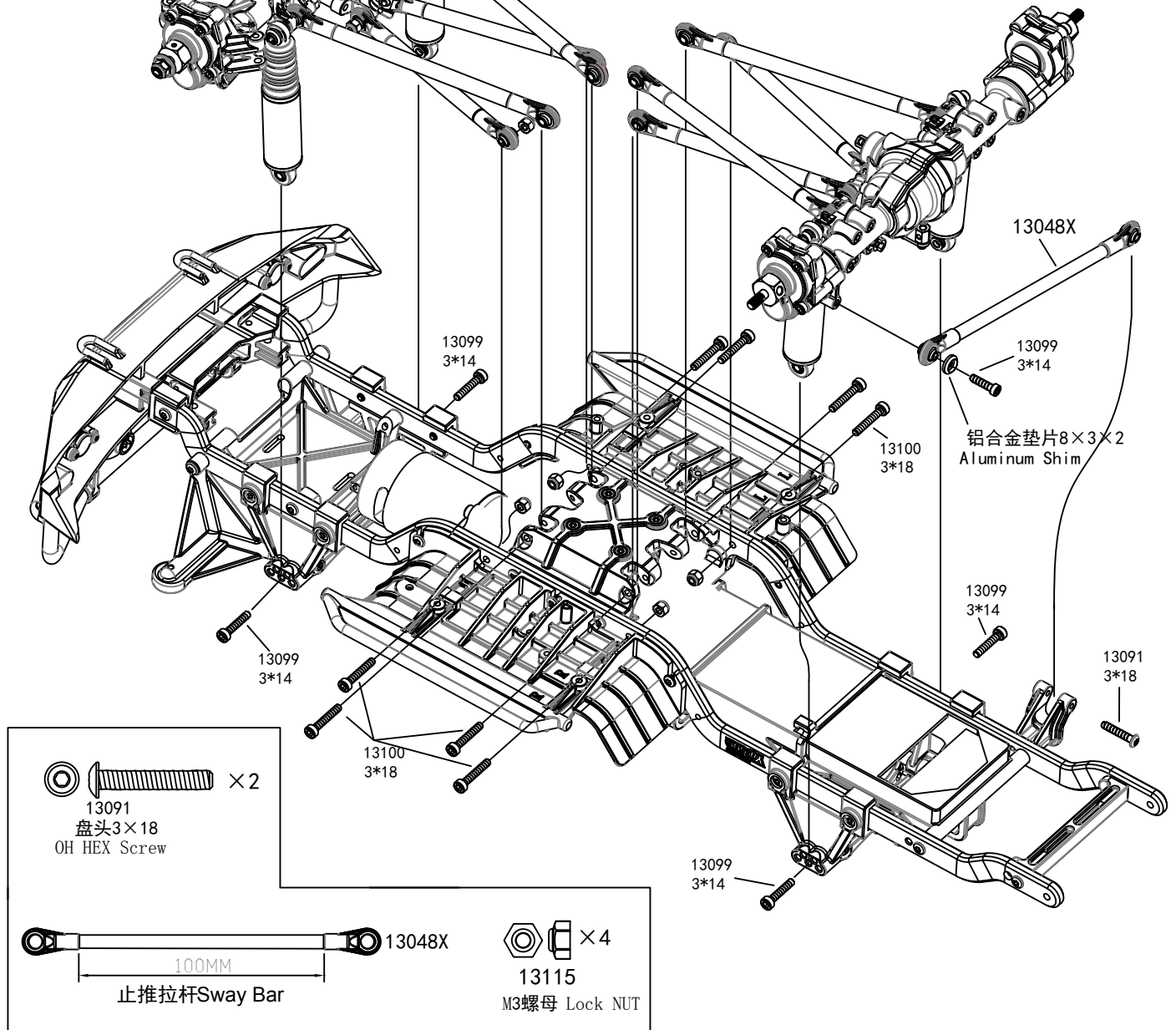
前后桥总组装 12-13



13099
杯头3×14
CAP Screw

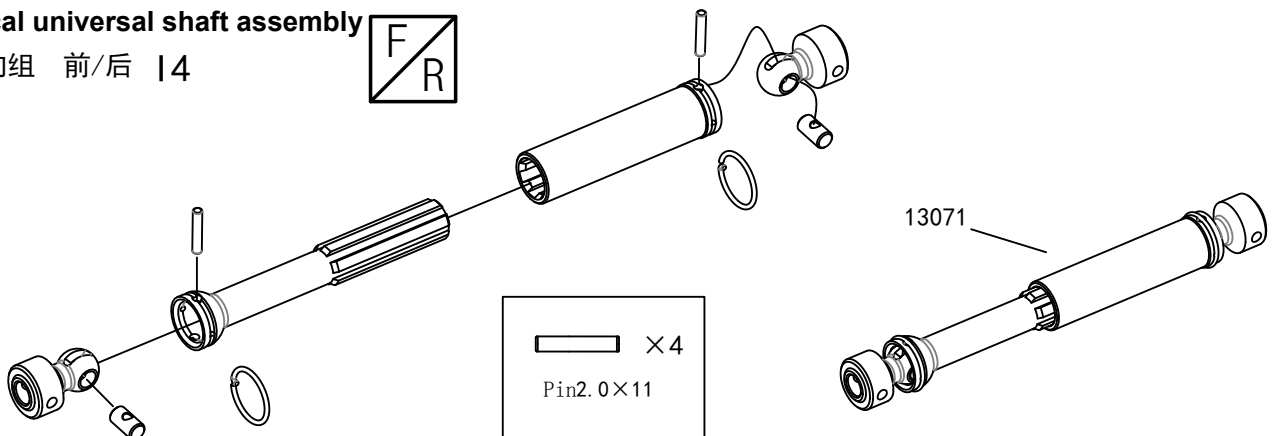
13100
杯头3×18
CAP Screw

1 × 1
铝合金垫片8×3×2
Aluminum Shim



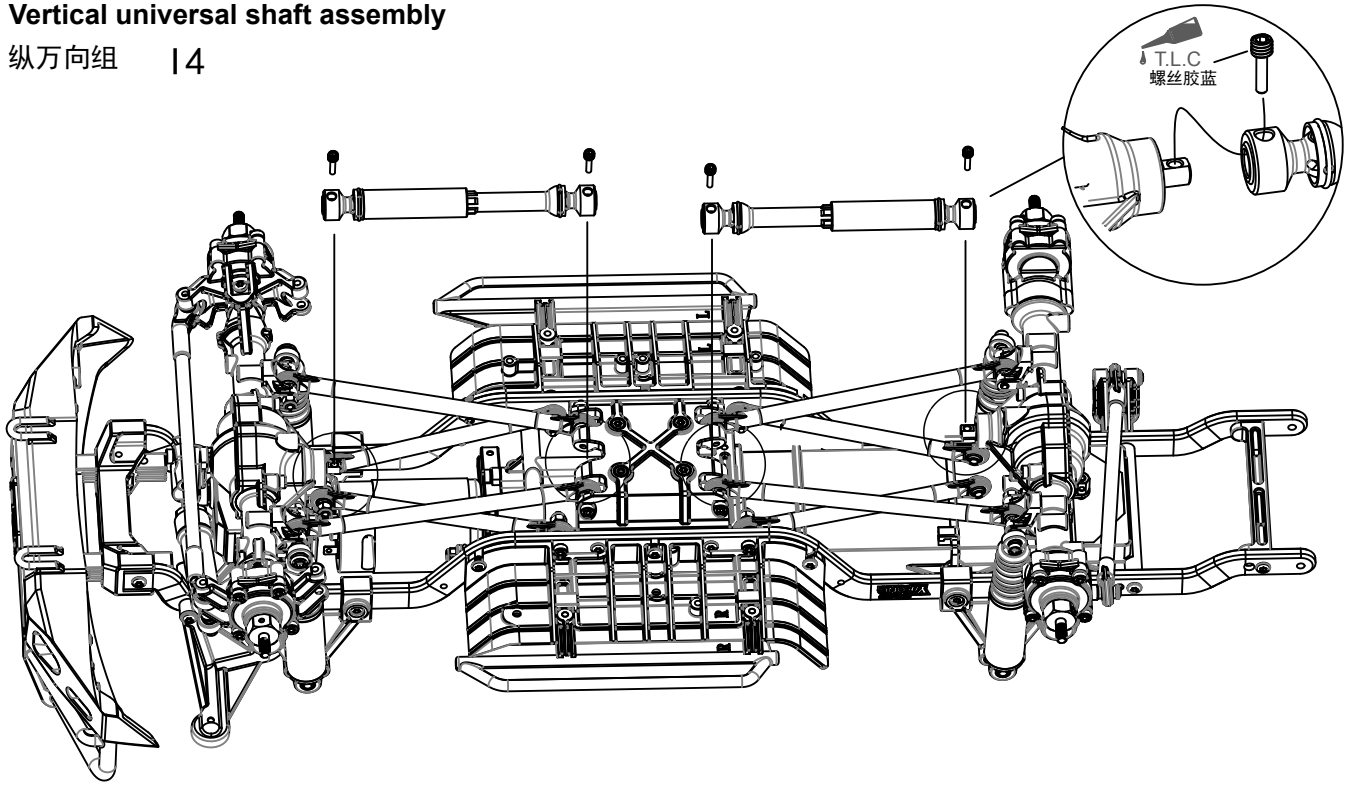
Vertical universal shaft assembly

纵万向组 前/后 14



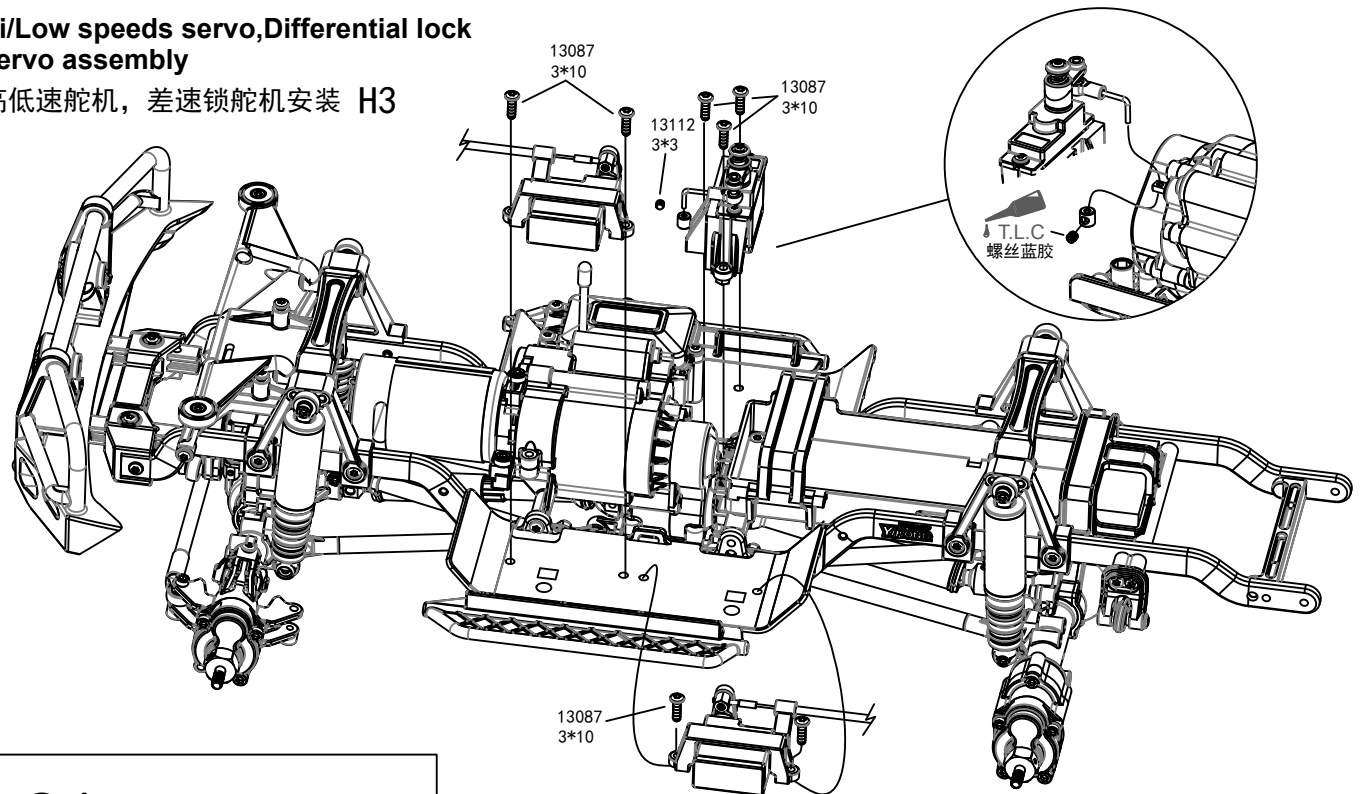
Vertical universal shaft assembly


纵万向组 | 4

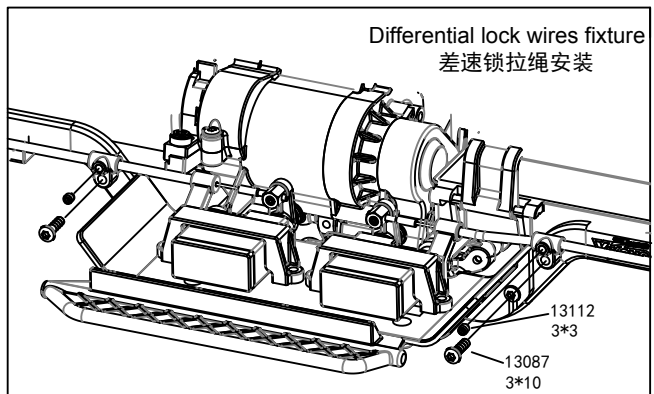


Hi/Low speeds servo, Differential lock servo assembly

高低速舵机，差速锁舵机安装 H3

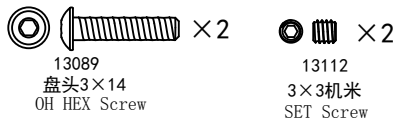
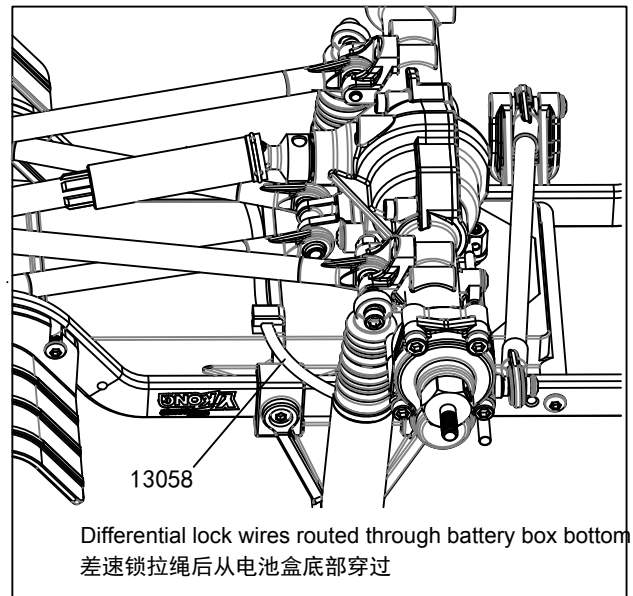
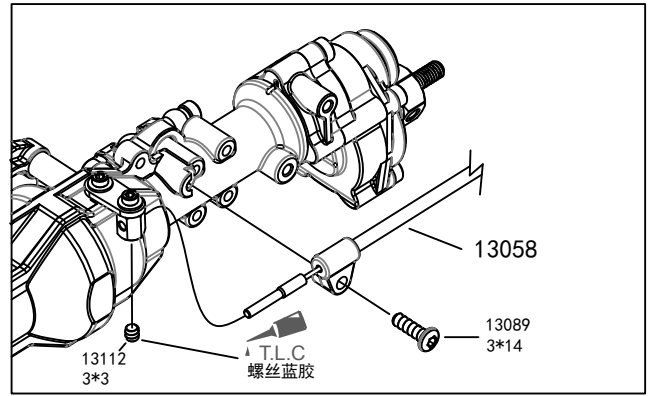
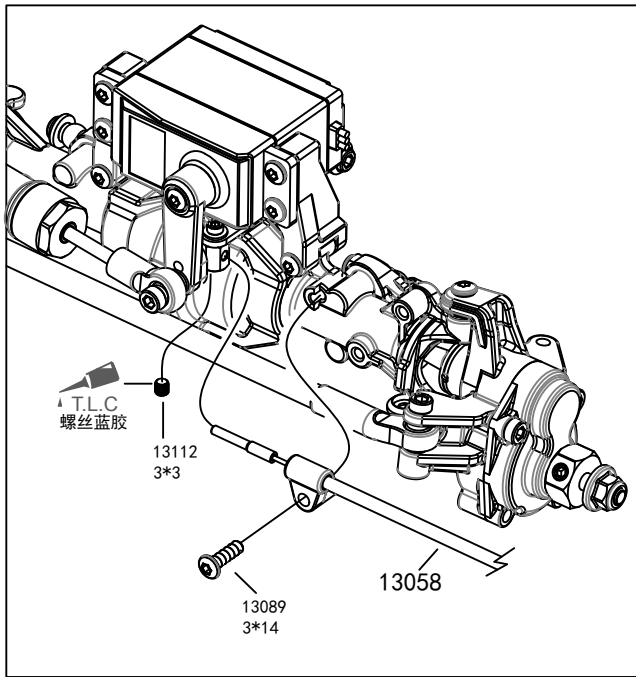


 × 9	 × 3
13087 盘头3×10 OH HEX Screw	13112 3×3毫米 SET Screw



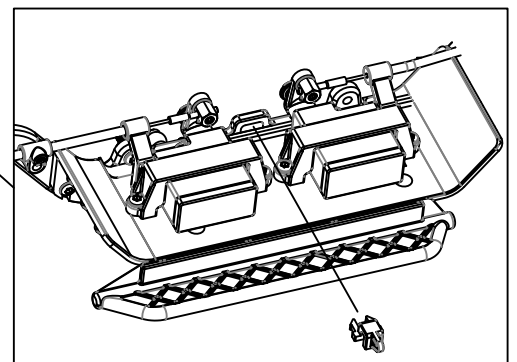
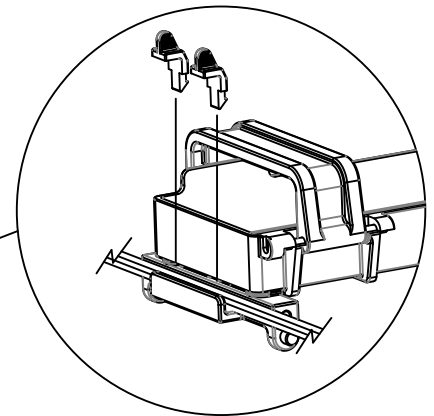
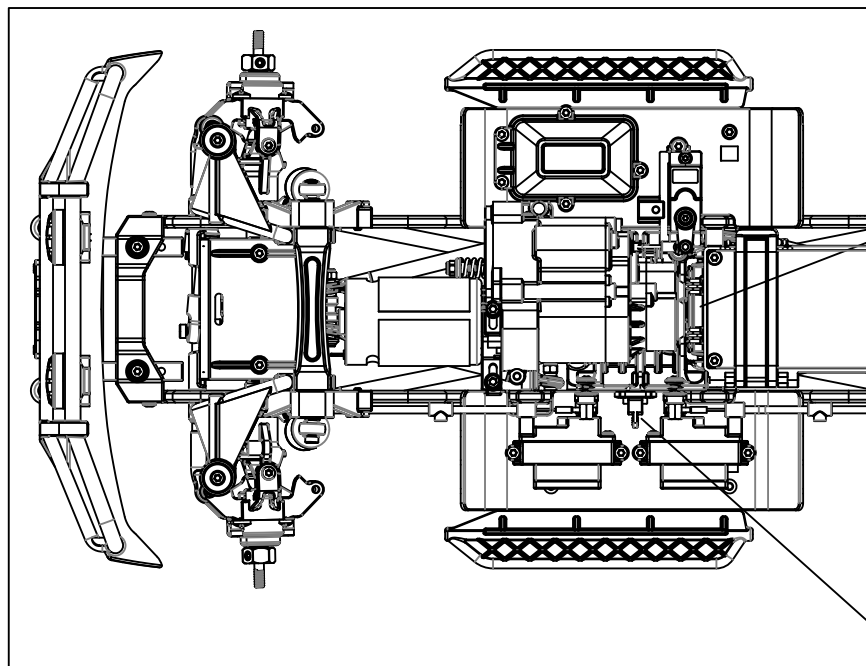
Differential lock wires fixture

差速锁拉绳安装 H1



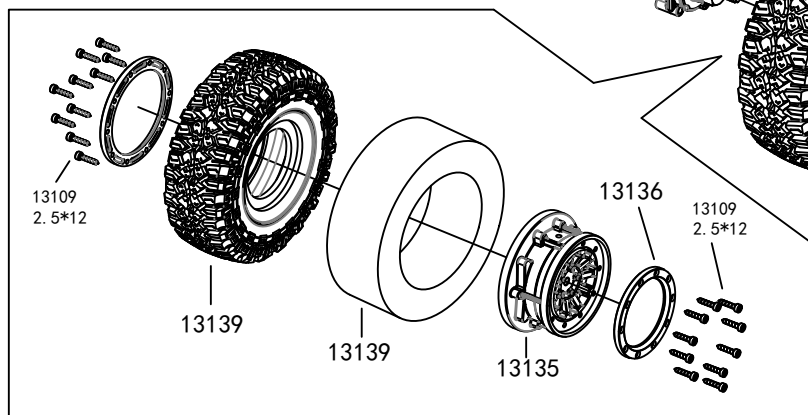
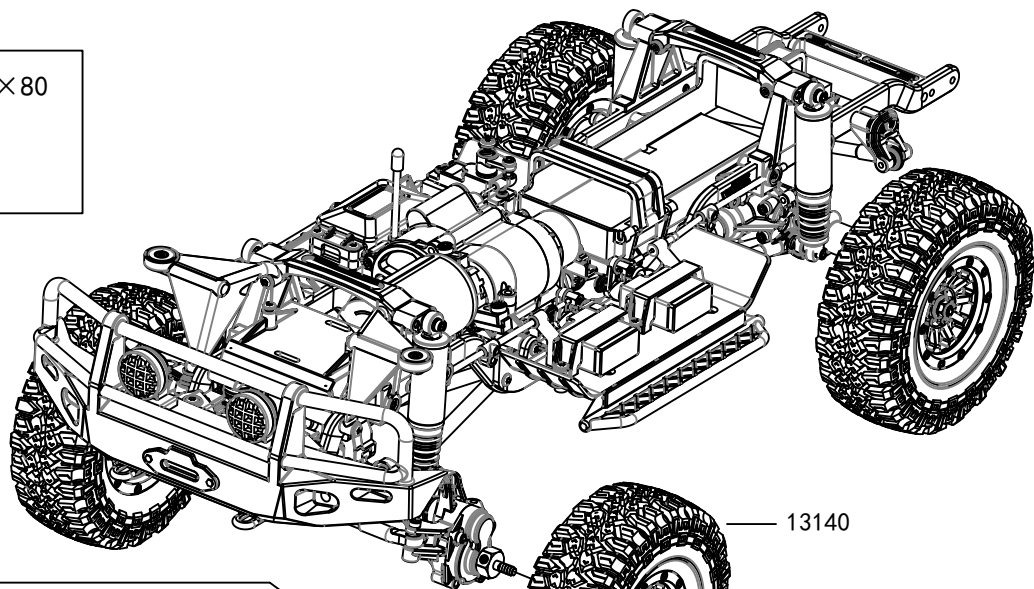
Servo wires zip tie Assembly

伺服器线束固定 E2



Tires Assembly
 轮胎安装 K1-K3

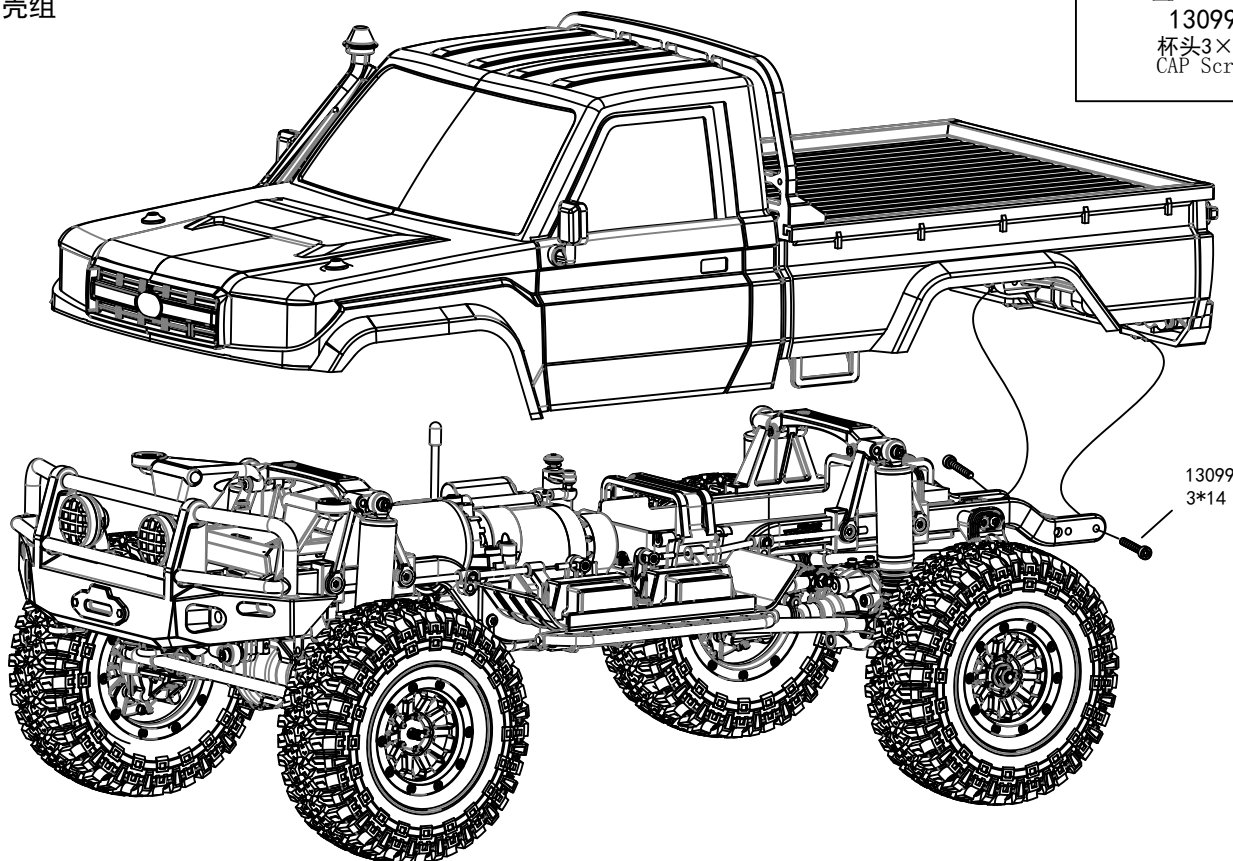

 × 80
 13109
 杯头2.5×12
 CAP Screw




 × 4
 13117
 M4尼龙螺母 Lock NUT

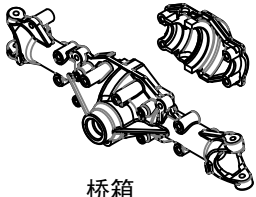
Body Assembly
 车壳组


 × 2
 13099
 杯头3×14
 CAP Screw



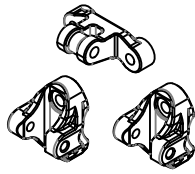
配件表 Parts List

13001



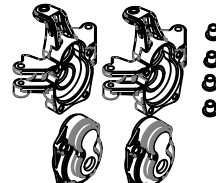
桥箱
Portal Axle Housing

13002



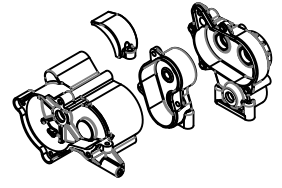
拉杆固定座
Linkage Mount

13003



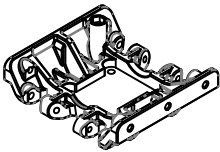
轮轴座
Wheel Axle Mounting

13004



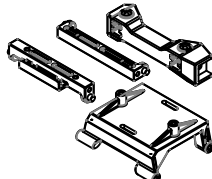
减速箱
Reduction Gearbox

13005



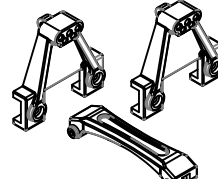
减速箱安装座
Reduction Gearbox Mount

13006



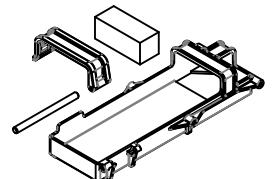
车架固定座
Chassis Mount

13007



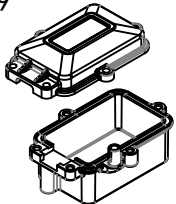
避震座
Shock Absorber Mount

13008



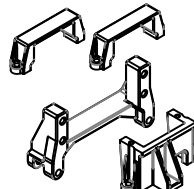
电池盒
Battery Case

13009



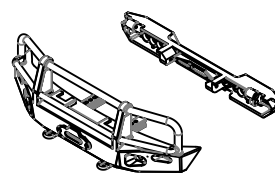
接收机盒
Receiver Case Set

13010



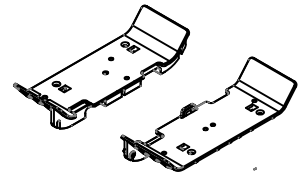
舵机座
Servo Mount

13011



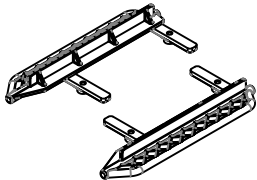
前后防撞板
Front And Rear Bumper

13012



左右护板
Left and Right Guard Board

13013



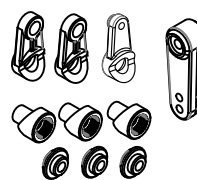
脚踏板
Foot Readles

13014



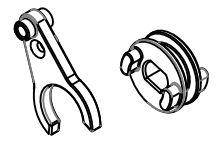
拉杆球头座组
Ball Linkage Ends

13015



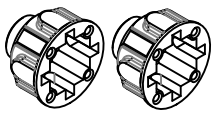
伺服臂组
Servo Arm Sets

13016



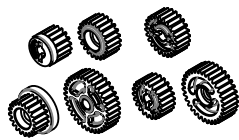
高低速拨叉
Speed Conversion Paddles

13017



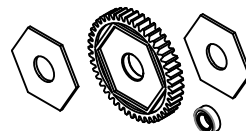
差速壳
Differential Case

13018



减速箱齿轮组
Reduction Gears

13019



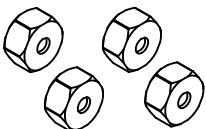
减速大齿
Super Gear

13020



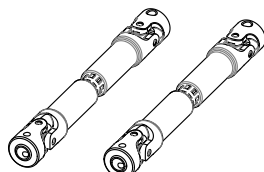
避震器球头座组
Absorber Ball Ends

13021



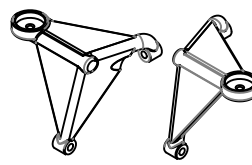
塑胶六角轮座
Plastic Hex Nuts

13022



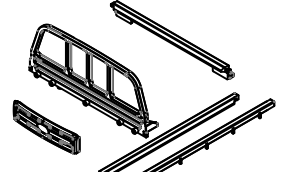
塑胶纵万向传动轴
Plastic Vertical Universal Shaft

13023



车壳支柱
Bodysell Post

13024



车厢架外
Bodysell Cage

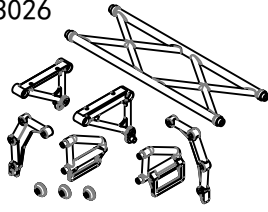
配件表 Parts List

13025



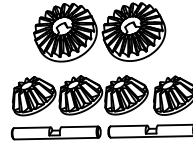
灯架, 水喉
Lamp Mounting & Water Tube

13026



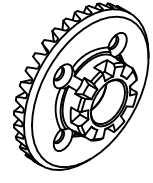
车壳安装架
Bodyshell Mount

13027



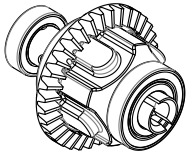
差速齿轮组
Differential Gears

13028



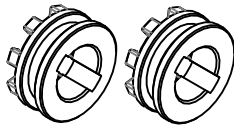
从动齿轮34T
34T Gear

13029



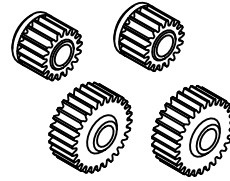
差速器
Differential Set

13030



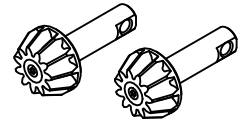
差速锁紧座
Differential Lock Mounting

13031



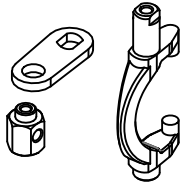
轮轴齿轮13T/18T
Wheel Axle Gears

13032



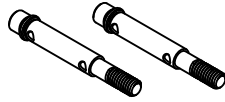
主动齿11T
11T Gear

13033



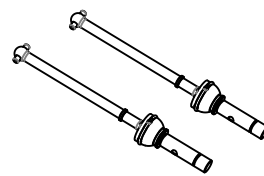
差速锁拨片
Differential Lock Paddles

13034



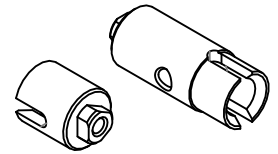
传动齿轮轴
Wheel Axle

13035



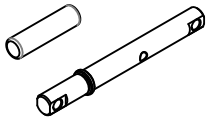
横万向传动轴
Horizontal Universal Shaft

13036



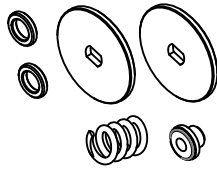
差速接杯
Differential Outdrives

13037



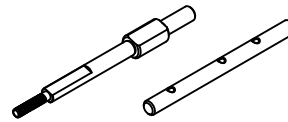
减速轴
Reduction Shaft

13038



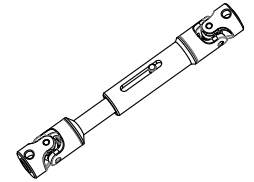
过载保护夹片
Overland Protection Set

13039



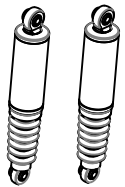
传动齿轮轴
Transmission Gear Shaft

13040



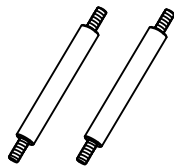
铝合金纵万向传动轴
Aluminum Vertical Universal Shaft

13041



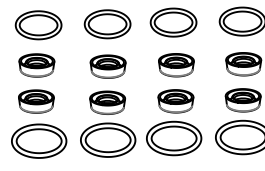
避震器组
Shock Absorber Set

13042



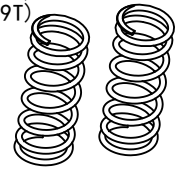
避震轴心
Shock Absorber Shaft

13043



避震O圈
Shock Absorber O-Ring

13044 (7T)
13044 (8T)
13044 (9T)



避震弹簧
Shock Absorber Springs

13045



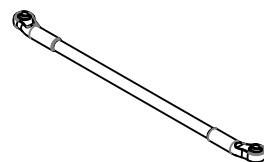
后桥拉杆下
Rear Deck Linkage (Low)

13046



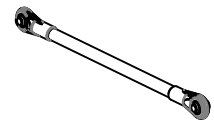
后桥拉杆上
Rear Deck Linkage (Up)

13047



转向拉杆
Steering Linkage

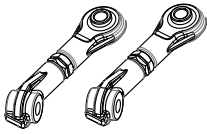
13048



止推拉杆
Sway Bar

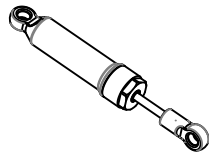
配件表 Parts List

13049



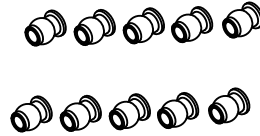
后桥固定拉杆
Rear Deck Linkage

13050



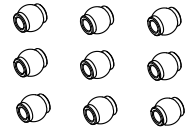
转向减震器
Steering Shock Absorber

13051



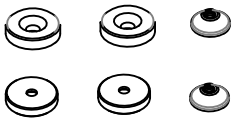
避震球头
Shock Absorber Ball End

13052



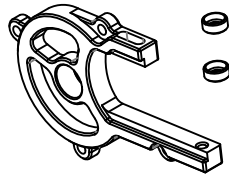
拉杆球头
Linkage Ball End

13053



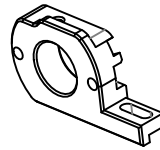
车壳磁铁扣
Bodyshell Magnet Button

13054



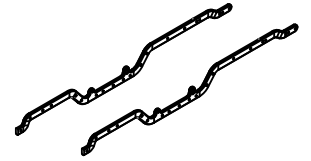
马达座
Motor Mount

13055



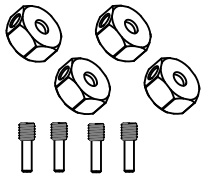
马达调整座
Motor Adjustment Mounting

13056



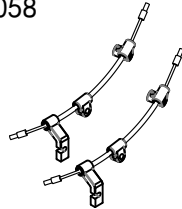
大梁
Chassis Frame

13057



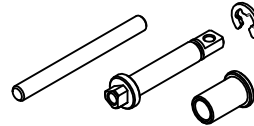
铝合金六角轮座
Aluminum Hex Nuts

13058



差速锁拉绳组
Differential Lock Wires

13059



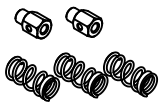
换速轴组
Speed Conversion Axle

13060



高低速拉杆
Speed Conversion Linkage

13061



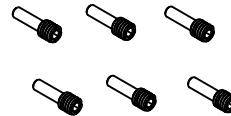
舵机缓冲组
Servo Saver

13062



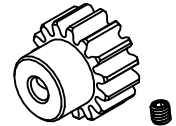
避震防尘套
Shock Absorber Dustproof

13063



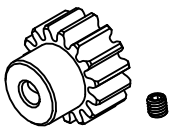
螺丝轴
Screw Axle

13064



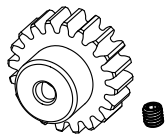
马达齿16T
16T Pinion Gear

13065



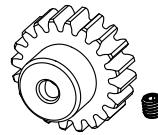
马达齿18T
18T Pinion Gear

13066



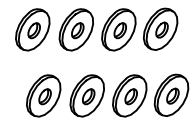
马达齿20T
20T Pinion Gear

13067



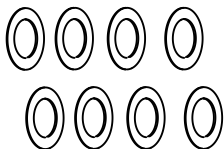
马达齿22T
22T Pinion Gear

13068



垫片6*2.5*0.5
Shims

13069



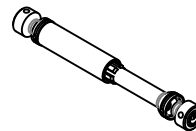
垫片8*5.1*0.2
Shims

13070



止推杆固定座
Sway Bar Mount

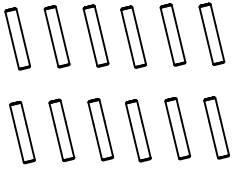
13071



钢制纵万向传动轴
Steel Vertical Universal Shaft

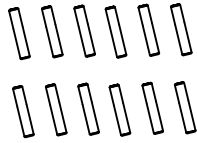
配件表 Parts List

13073



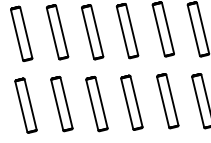
3*12销子
Pins

13074



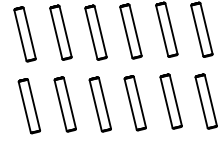
2*8销子
Pins

13075



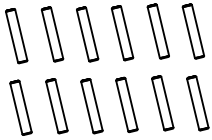
2*10销子
Pins

13076



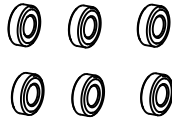
1.6*11销子
Pins

13077



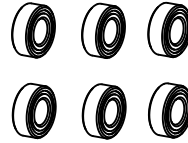
2.5*12销子
Pins

13078



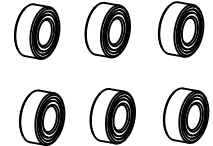
轴承7*4*2.5
Ball Bearing

13079



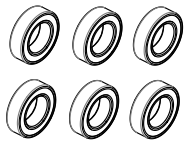
轴承9*5*3
Ball Bearing

13080



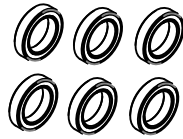
轴承10*5*4
Ball Bearing

13081



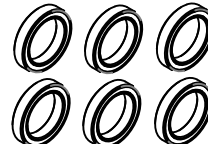
轴承14*8*4
Ball Bearing

13082



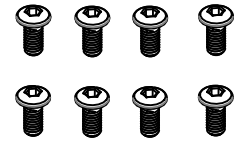
轴承18*12*4
Ball Bearing

13083



轴承21*15*4
Ball Bearing

13084



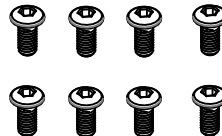
盘头内六角螺丝M3*6
Button Head Screws

13085



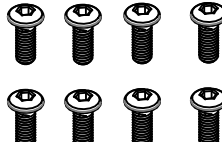
杯头内六角螺丝M2*4
Cap Head Screws

13086



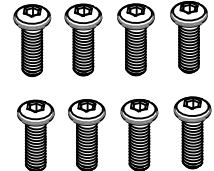
盘头内六角螺丝M3*8
Button Head Screws

13087



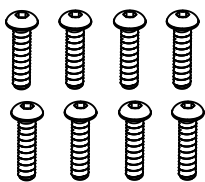
盘头内六角螺丝M3*10
Button Head Screws

13088



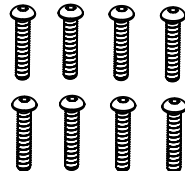
盘头内六角螺丝M3*12
Button Head Screws

13089



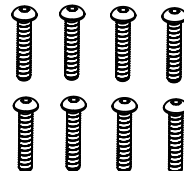
盘头内六角螺丝M3*14
Button Head Screws

13090



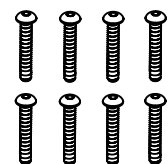
盘头内六角螺丝M3*16
Button Head Screws

13091



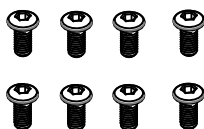
盘头内六角螺丝M3*18
Button Head Screws

13092



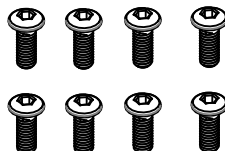
盘头内六角螺丝M3*25
Button Head Screws

13093



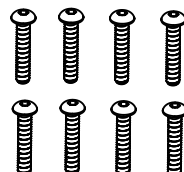
盘头内六角螺丝M2.5*6
Button Head Screws

13094



盘头内六角螺丝M2.5*8
Button Head Screws

13095



盘头内六角螺丝M2.5*14
Button Head Screws

13096



杯头内六角螺丝M3*8
Cap Head Screws

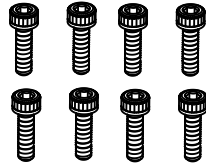
配件表 Parts List

13097



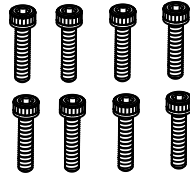
杯头内六角螺丝M3*10
Cap Head Screws

13098



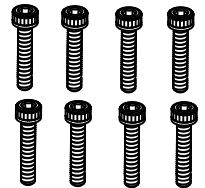
杯头内六角螺丝M3*12
Cap Head Screws

13099



杯头内六角螺丝M3*14
Cap Head Screws

13100



杯头内六角螺丝M3*18
Cap Head Screws

13101



杯头内六角螺丝M3*24
Cap Head Screws

13102



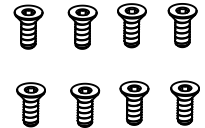
杯头内六角螺丝M3*28
Cap Head Screws

13103



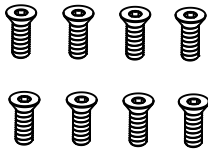
杯头内六角螺丝M3*32
Cap Head Screws

13104



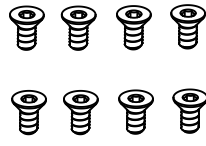
平头内六角螺丝M2.5*6
Flat Head Screws

13105



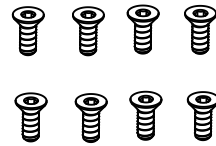
平头内六角螺丝M2.5*8
Flat Head Screws

13106



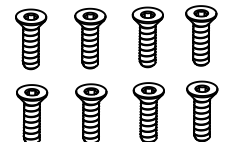
平头内六角螺丝M3*6
Flat Head Screws

13107



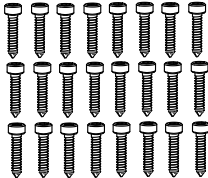
平头内六角螺丝M3*8
Flat Head Screws

13108



平头内六角螺丝M3*12
Flat Head Screws

13109



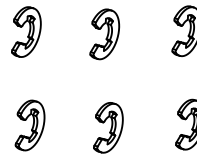
杯头自攻牙螺丝M2.5*12
Cap Head Self Tapping Screws

13110



杯头内六角螺丝M2*6
Cap Head Screws

13111



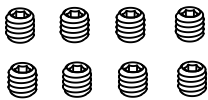
4.0E扣
E Clip

13112



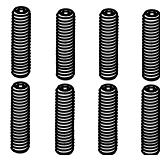
机米3*3
Headless Screws

13113



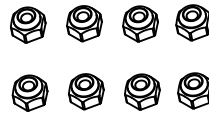
机米4*4
Headless Screws

13114



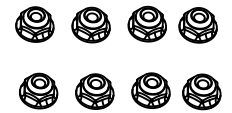
机米3*20
Headless Screws

13115



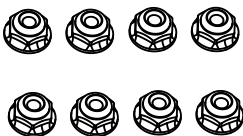
M3尼龙螺母
Lock Nuts

13116



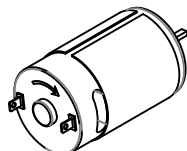
M3法兰螺母
Flange Lock Nuts

13117



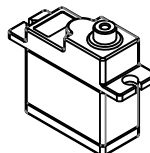
M4法兰螺母
Flange Lock Nuts

13118



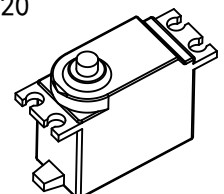
550有刷马达
Brushed Motor

13119



17G舵机
Servo

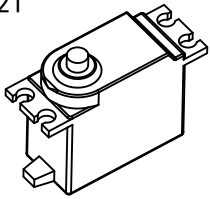
13120



9KG舵机
Servo

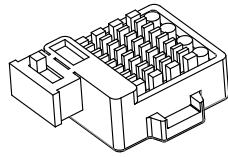
配件表 Parts List

13121



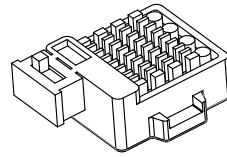
6KG舵机
Servo

13122



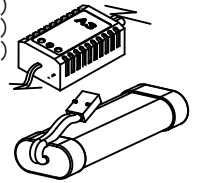
60A有刷电调
60A Brushed ESC

13123



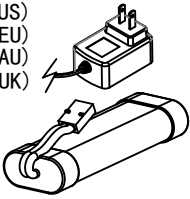
40A有刷电调
40A Brushed ESC

13124 (US)
13124 (EU)
13124 (AU)
13124 (UK)



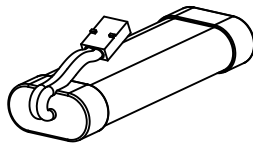
A3充电器7.2V3200MAH镍氢电池
Ni-MH Battery & Charge

13125 (US)
13125 (EU)
13125 (AU)
13125 (UK)



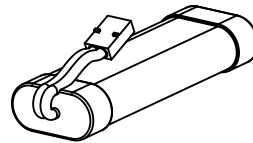
简易充电器7.2V2000MAH镍氢电池
Cap Head Screws

13126



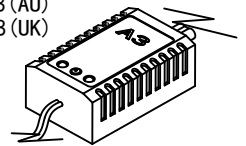
7.2V3200MAH镍氢电池
Ni-MH Battery

13127



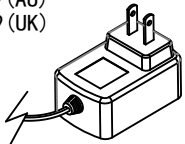
7.2V2200MAH镍氢电池
Ni-MH Battery

13128 (US)
13128 (EU)
13128 (AU)
13128 (UK)



A3充电器
Charger

13129 (US)
13129 (EU)
13129 (AU)
13129 (UK)



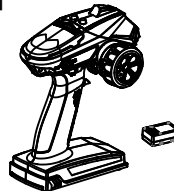
简易充电器
Charger

13130



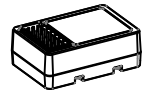
发射机6通和接收机
6 Channel Transmitter & Receiver Set

13131



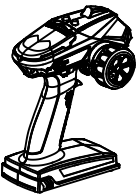
发射机3通和接收机
3 Channel Transmitter & Receiver Set

13132



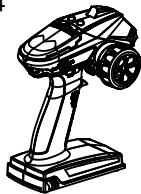
接收机
Receiver

13133



发射机6通
6 Channel Transmitter

13134



发射机3通
3 Channel Transmitter

13135



轮框
Gray Rims

13136



轮框环
Rim rings

13137



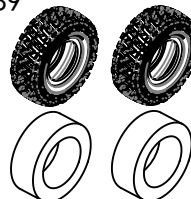
电镀轮框
Plating Rims

13138



电镀轮框环
Plating Rim rings

13139



轮胎皮, 海绵
Tires & Foams

13140



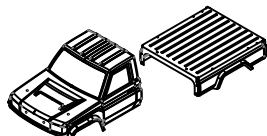
轮胎组
Wheels

13141



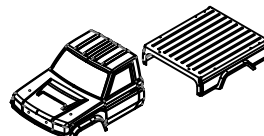
轮胎组电镀
Plating Wheels

13142



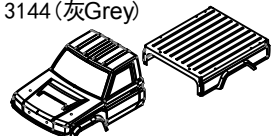
透明车壳PC
Transparent Bodyshell

13143



透明车壳PVC
Transparent Bodyshell

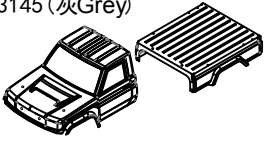
13144 (白White)
13144 (黄Yellow)
13144 (灰Grey)



车壳PC
Bodyshell

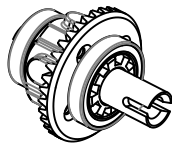
配件表 Parts List

13145 (白White)
13145 (黄Yellow)
13145 (灰Grey)



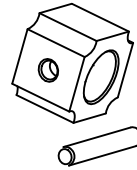
车壳PVC
Bodyshell

13146



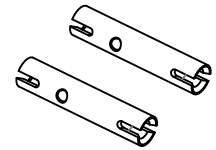
无差速从动齿直轴组
Ring gear set without differential

13147



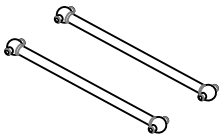
直轴固定块
Driveshaft block

13148



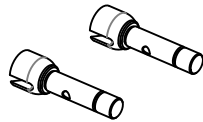
直轴接杯
Outdrives

13149



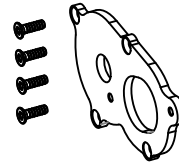
后横普通传动轴
Rear driveshaft

13150



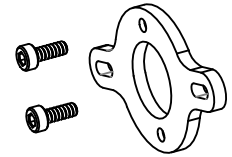
后横轮轴
Rear wheel Axle

13151



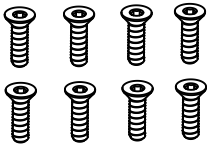
马达板
Motor Plate

13152



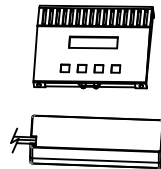
马达调整板
Motor Adjustment Plate

13153



平头内六角螺丝M3*10
Flat Head Screws

13154



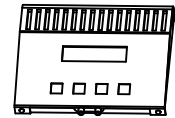
B6充电器7.4V6500MAH锂电池55C
Li-Po Battery & Charge

13155



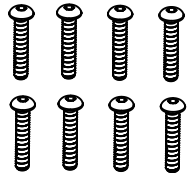
7.4V6500MAH锂电池55C
Li-Po Battery

13156



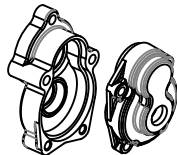
B6平衡充电器
Charge

13159



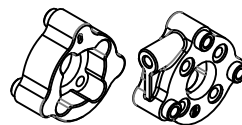
盘头内六角螺丝M2.5*16
Button Head Screws

13160

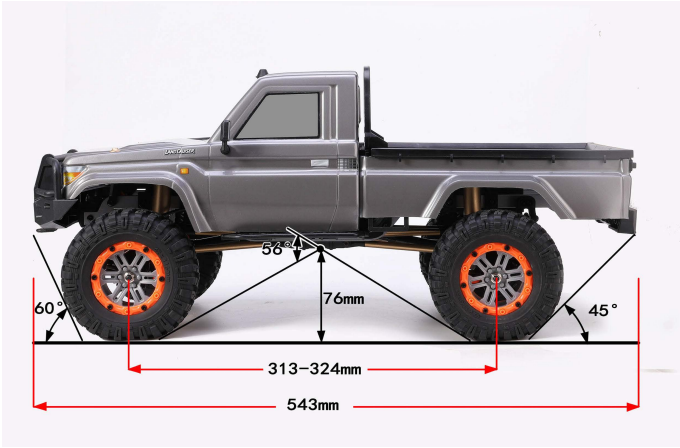


后轴座组
Rear Hub Set

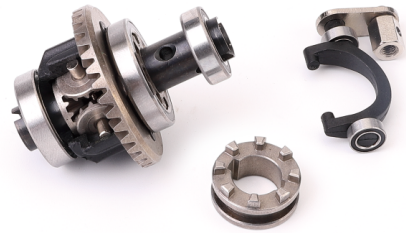
13161



后桥连接块
Rear axle connector



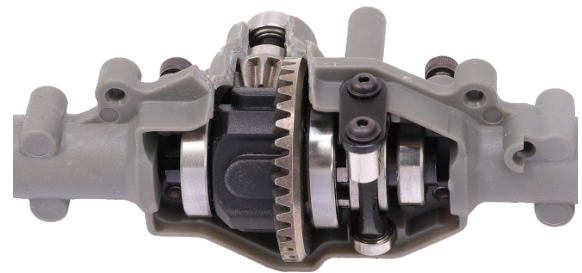
Hi/Low Range Transmission



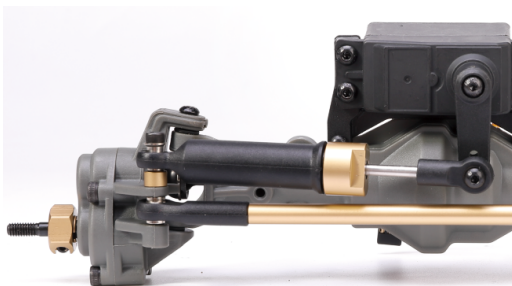
Front and rear differential lock structure



Differential lock Servo



F/R differential lock function



Unique steering shock absorber design



CNC aluminium adjustable motor mount



Metal Gear



Metal Axle